



STANLEY®



HAND TOOLS CATALOGUE 2025-2026

THE MEASURE OF A PRO™
STANLEYTOOLS.COM



PERFORMANCE IN ACTION™

THE HISTORY OF STANLEY® TOOLS

1863

STANLEY introduced hammers to their line-up



1911

STANLEY began manufacturing chisels and vises

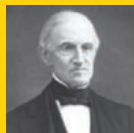
1936

STANLEY manufactured its 1st utility knife



1843

The STANLEY WORKS was founded in New Britain, Connecticut by Frederick T. Stanley.



1870

STANLEY began manufacturing screwdrivers and hand planes

1920

A new logo is introduced to symbolize the merger of the Stanley Rule & Level Company and the Stanley Works



1854

Begin to manufacture boxwood rules

1876

Miter boxes were introduced



1930

STANLEY made the 1st steel tape rule



1857

Stanley Rule & Level Company established by Henry Stanley. STANLEY begins to manufacture levels and squares

1869

Purchased Bailey, Chaney and Company and acquired the right to manufacture tools under Bailey's patents

1928

The Stanley Works broke into the electric hand tools market with an electric drill, screwdriver and bench grinder



1954

Time Magazine published a cover story titled "Do-It-Yourself - The New Million Dollar Hobby. STANLEY was ideally positioned to benefit from this trend and quickly developed products for this new market



1999

STANLEY launched the FATMAX Tape Rule and the FATMAX AntiVibe Hammer



2020

STANLEY launched innovative SLIM SAG platform with best in class Girth diameter

2024

STANLEY continues to introduce new and innovative products that change the way we work

1963

STANLEY opened the largest hand tool plant in the world in New Britain, CT. The same year, they introduce the PowerLock Tape Rule



1998

STANLEY acquired ZAG Industries Lt., an Israeli maker of plastic storage products, including tool boxes



2015

STANLEY newly launched power tools range



2023

180 Anniversary

2011

STANLEY launches carbide blades

2021

V20 Cordless Platform launched

V20 LITHIUM ION **POWERTOOLS**

STANLEY

STANLEY® is the longest established and largest hand tool manufacturer in the world. Since 1843, STANLEY® has become a leading name in hand tool industry; we've set the standard for excellence in everything we do. No company on earth has a stronger or more compelling history of delivering the hardworking, powerful and innovational tools that help professionals, tradesmen and consumers around the world. Whether you're a retailer looking for the best quality products to offer your customers, or a skilled user looking for the best tools, STANLEY® is here to serve you.

STANLEY® GLOBAL PRESENCE

20+ Global manufacturing sites and labs with similar process and quality controls for consistent quality.



AWARDS & RECOGNITION

**MORE THAN 500
WORLD'S FIRST SKUs**



MORE THAN 150 PATENTS



**MORE THAN 150
PRESTIGIOUS AWARDS**



STANLEY WINS POPULAR MECHANICS 2021 TOOL AWARD

MOST REPUTABLE
2014 WORLD'S MOST REPUTABLE
AMERICAN COMPANIES

STANLEY BLACK & DECKER RANKED
11TH MOST REPUTABLE

**BRAND OF THE
YEAR 2019**

PRWEEK'S PURPOSE AWARDS

MOST ADMIRED
2019 WORLD'S MOST
ADMIRED COMPANIES

STANLEY BLACK & DECKER RANKED
5TH MOST ADMIRED

**AMERICA'S
BEST**

EMPLOYERS
FOR WOMEN

**BEST
PLACES
TO WORK FOR
LGBTQ EQUALITY
DIVERSITY**

CORPORATE EQUALITY
INDEX

**BEST
OUTLOOK FOR GLOBAL
CULTURE & PLACES
TO WORK**

COMPARABLY

#28

U.S. REPTRAK
MOST REPUTABLE
COMPANIES

REPUTATION
INSTITUTE

**WORLD'S
BEST EMPLOYERS**

FORBES

**WORLD'S
TOP**

FEMALE-FRIENDLY
COMPANIES

FORBES

#1
WORLD LEADER
IN TOOLS INDUSTRY

100
BEST CORPORATE
CITIZENS
3BL MEDIA

**BEST
COMPANY**
FOR LEADERSHIP,
DEVELOPMENT
& HAPPINESS
COMPARABLY

4TH
CONSECUTIVE YEAR
DOW JONES SUSTAINABILITY
WORLD INDEX

#1
WORLD LEADER
IN ENGINEERED
FASTENING SYSTEMS

14
TOOL AWARDS
POPULAR
MECHANICS

46
PRODUCTS NAMED
PRO TOOL
INNOVATION AWARDS

BEST
RIDING LAWN
MOWERS
BOB VILA

BEST
WORKPLACE FOR
INNOVATORS
FAST COMPANY

60
COUNTRIES
GLOBAL
PRESENCE

5TH
CONSECUTIVE
YEAR MOST JUST
COMPANIES
JUST CAPITAL

#30
100 MOST
SUSTAINABLE
COMPANIES
BARRON

AMERICA'S
MOST RESPONSIBLE
COMPANIES
NEWSWEEK

CLEAN200
ON THE LIST
CORPORATE KNIGHTS

6TH
WATER CHANGE
A-LIST
CDP

11TH
CONSECUTIVE YEAR
DOW JONES SUSTAINABILITY
NORTH AMERICA INDEX

9 YEARS
ON CLIMATE
CHANGE A-LIST
CDP

TOTAL CARE

WE ARE COMMITTED TO EXCELLENCE IN OUR TOOLS AND OUR SUPPORT

Total Care establishes more direct and effective engagement with customers and channel partners. Our goal is to give you an added value experience, and to increase your customers' satisfaction with Stanley Black & Decker by providing more engaged support.



**SALES AND
AFTER SALES
SUPPORT**



**ORIGINAL
PARTS**



**2 YEARS
WARRANTY**



**GREAT SERVICE
NETWORK**



INFORMATION



**OMNICHANNEL
SUPPORT**

STANLEY

SERVICE

CONVENIENCE

At the heart of the STANLEY 5 star service promise are 5 star service centers which are conveniently located throughout the country, with specialists always available to answer any questions whether you are on or off the job site.

SPEED

Having your tools back in action in the fastest time possible is our prime objective. Subject to parts availability, most repairs should not take long time in the workshop and for those smaller urgent repairs we provide a "while-u-wait" service.

QUALITY

Highest Quality is assured with STANLEY factory trained technicians carrying out all repairs with all work being backed by our 90 day warranty. Each STANLEY repair comes with our personal "satisfaction tag" listing all the work done and a STANLEY contact telephone number should you be less than 100% happy with the repair.

GENUINE PARTS

All parts used in repairs are original, ensuring both the highest quality and a perfect fit every time.

ONLINE SERVICE

www.2helpU.com provides information on STANLEY After Sales Services, including STANLEY authorized service center locations some frequently asked questions, technical Information, spare part details and warranty policy. You can also contact us directly via the website.

www.2helpU.com

Not all STANLEY service centers are 5 star rated. Those that are not may not be able to provide all services available above but will display in-store a detailed list of their selected services.





STANLEY
LIFETIME
LIMITED
WARRANTY

STANLEY is confident of the quality of its products and offers an outstanding warranty for customers. We have identified a need amongst our end-users for a lengthier warranty policy.

Therefore, we will offer limited lifetime warranty for STANLEY hand tools

In order to honor your warranty, proof of purchase must be provided.

Latest Warranty Terms and Conditions are available from www.2helpU.com. Or consult your local distributor, authorized service center or local STANLEY office for more details.

STANLEY reserves the right to review and amend its warranty policies, periods and product eligibility without notice as STANLEY considers appropriate.



CONTENTS

03 CLAMPING TOOLS

12 - CUTTING TOOLS

19 FASTENING TOOLS

29 - FINISHING TOOLS

32 - ELECTRONIC DEVICES & LASERS

36 LAYOUT TOOLS

40 - MATERIAL HANDLING

43 - MEASURING TOOLS

46 MECHANIC TOOLS

56 - SPECIALTY TOOLS

58 STORAGE

64 - STRIKING TOOLS

69 WRENCHES

80 - HAND TOOL SET

84 - BRITool

89 AUTHORIZED SERVICE CENTER

The background of the entire page is a close-up photograph of a wooden workbench. On the workbench, there are several tools: a pair of yellow and black pliers with 'STANLEY 74-362' on the head, several metal nails, and some yellow and black plastic fasteners. The Stanley logo is prominently displayed in the top left corner.

STANLEY®

CLAMPING TOOLS

Extensive quality testing is done on every clamping tool design, ensuring that daily performance exceeds industry standards. This comprehensive range allows for varied utility.

THE MEASURE OF A PRO

www.STANLEYTOOLS.com

VICE MECHANICS- 1



STANLEY SKU	DESCRIPTION
81-602-1-22	Vice 120mm Mechanics- 1
81-603-1-22	Vice 150mm Mechanics- 1

- Better Performance
- Better than Iron
- Lightweight compared to Iron

C CLAMP MAXSTEEL



STANLEY SKU	DESCRIPTION
83-033K	C Clamp Maxsteel, Size 75mm-3x57mm-2 1/4
83-034K	C Clamp Maxsteel, Size 100mm-4 X 75mm-3

- High-visibility, corrosion-resistant finish
- Advanced frame design resists flexing and bending
- Heavy-duty, malleable iron and steel construction
- Roll-formed screw threads ensure smooth operation and durability
- Oversized "T" handle for extra torque

BASIC LONG NOSE PLIERS



STANLEY SKU	DESCRIPTION
STHT84119-8	Miniature Basic Long Nose Pliers 5 In

- Forged carbon steel jaws fully heat treated for optimum performance and durability
- Double dipped handle allows for a comfortable grip
- Drop-forged steel is strong and durable
- Meets ANSI specifications



NOSE PLIER



STANLEY SKU	DESCRIPTION
STHT84126-8	5" Bent Nose Pliers-Miniature

- Forged carbon steel jaws fully heat treated for optimum performance and durability
- Double dipped handle allows for a comfortable grip
- Drop-forged steel is strong and durable
- Meets ANSI specifications



BASIC NEEDLE NOSE PLIERS



STANLEY SKU	DESCRIPTION
STHT84096-8	5" Needle Nose Pliers-Miniature

- Forged carbon steel jaws fully heat treated for optimum performance and durability
- Double dipped handle allows for a comfortable grip
- Drop-forged steel is strong and durable
- Meets ANSI specifications



3PCS 8" LINESMAN PLIERS SET



STANLEY SKU	DESCRIPTION
STHT90162-8	3 Piece Pliers Set (1) 8 In Linesman Pliers

- 8" Linesman Pliers
- 6" Diagonal Cutting Pliers
- 6" Long Nose Pliers



CUTTING PLIER



STANLEY SKU	DESCRIPTION
STHT84124-8	Basic Diagonal Cutting Pliers 4 in Le

- Forged carbon steel jaws fully heat treated for optimum performance and durability
- Meets ANSI specifications 5.0

BASIC HIGH LEVERAGE CABLE CUTTING PLIERS



STANLEY SKU	DESCRIPTION
STHT84124-8	Basic Diagonal Cutting Pliers 4 in Le

- Designed for electric cable, copper, aluminum, etc
- Notched jaw holds & cuts cables in a clean & sharp way

TOWER PINCER



STANLEY SKU	DESCRIPTION
84-282-23	10" / 250mm Tower Pincers

- Tempered alloy steel for strength and durability
- Rust resistant protective finish

COMBINATION SNAP RING PLIERS



STANLEY SKU	DESCRIPTION
84-168-22	Pliers Combination Snap Ring

- Forged body.
- With anti-corrosion coating.
- Machined jaws for gripping.
- Anti-slip handles for comfortable use.
- It can remove internal or external rings.

PRECISION NIPPER PLIERS



STANLEY SKU	DESCRIPTION
84-036	100mm/4" Precision Nipper Pliers

- 2 times longer cutting life 25% less cutting effort
- Cutting edge are precision ground & pre-finished before assembly for consistent performance
- Full collar, anti-slip ergonomic handle for comfort & superior gripping Machined teeth for maximum gripping in tight spaces
- Made of strong chrome vanadium material for longer lasting cutting Maximum anti-rust capability

LONG NOSE LOCKING PLIERS



STANLEY SKU	DESCRIPTION
84-389-S	9.5" Long Nose Locking Pliers

- Bi-material handle for anti-slip & comfort
- Serrated jaws made of chrome molybdenum material
- Heat treated adjustable screw

LOCKING PLIERS



STANLEY SKU	DESCRIPTION
84-368-1-S	7" Locking Curve Jaw Pliers
84-369-1-S	10" Locking Curve Pro Pliers

- Chrome plating is corrosion resistant
- Forged and machined jaws for maximum durability
- Screws adjust the jaws and the clamping pressure amount for precision
- Safety and ease when opening

DYNAGRIP™ LINESMAN PLIERS



STANLEY SKU	DESCRIPTION
STHT84035-8	7" Linesman Pliers
STHT84029-8	8" Linesman Pliers

- Forged carbon steel jaws fully heat treated for optimum performance and durability
- Induction hardened cutting edges for greater reliability in cutting
- Bi-material soft grip handle provides excellent comfort
- Ergonomically designed DYNAGRIP™ handle with finger guards for better efficiency and handling



STRAIGHT LOCKING PLIERS



STANLEY SKU	DESCRIPTION
84-370-1-S	7" Straight Jaw Locking Pliers
84-371-1-S	10" Straight Pro Locking Pliers

- Chrome plating is corrosion resistant
- Forged and machined jaws for maximum durability
- Screws adjust the jaws and the clamping pressure amount for precision
- Safety and ease when opening

DYNAGRIP™ DIAGONAL CUTTING PLIERS



STANLEY SKU	DESCRIPTION
STHT84027-8	6" Diagonal Cutting Pliers
STHT84028-8	7" Diagonal Cutting Pliers

- Forged carbon steel jaws fully heat treated for optimum performance and durability
- Induction hardened cutting edges for greater reliability in cutting
- Bi-material soft grip handle provides excellent comfort
- Ergonomically designed DYNAGRIP™ handle with finger guards for better efficiency and handling



DYNAGRIP™ LONG NOSE PLIERS



STANLEY SKU	DESCRIPTION
STHT84031-8	6" Long Nose Pliers
STHT84032-8	8" Long Nose Pliers

- Forged carbon steel jaws fully heat treated for optimum performance and durability
- Bi-material soft grip handle provides excellent comfort
- Ergonomically designed DYNAGRIP™ handle with finger guards for better efficiency and handling



DYNAGRIP™ DIAGONAL CUTTING PLIERS



STANLEY SKU	DESCRIPTION
STHT84071-8	6" Bent Nose Pliers
STHT84072-8	8" Bent Nose Pliers

- Forged carbon steel jaws fully heat treated for optimum performance and durability
- Bi-material soft grip handle provides excellent comfort
- Ergonomically designed DYNAGRIP™ handle with finger guards for better efficiency and handling



DYNAGRIP™ SLIP JOINT PLIERS



STANLEY SKU	DESCRIPTION
STHT84055-8	6" Slip Joint Pliers
STHT84026-8	8" Long Nose Pliers

- Forged carbon steel jaws fully heat treated for optimum performance and durability
- Bi-material soft grip handle provides excellent comfort
- Ergonomically designed DYNAGRIP™ handle with finger guards for better efficiency and handling



DYNAGRIP™ GROOVE JOINT PLIERS



STANLEY SKU	DESCRIPTION
STHT84034-8	8" Groove Joint Pliers
STHT84024-8	10" Groove Joint Pliers
STHT84021-8	12" Groove Joint Pliers

- Forged carbon steel jaws fully heat treated for optimum performance and durability
- Bi-material soft grip handle provides excellent comfort
- Ergonomically designed DYNAGRIP™ handle with finger guards for better efficiency and handling



DYNAGRIP™ WIRE STRIPPER PLIERS



STANLEY SKU	DESCRIPTION
STHT84075-8	6" Wire Stripper Pliers

- Forged carbon steel jaws fully heat treated for optimum performance and durability
- Bi-material soft grip handle provides excellent comfort
- Ergonomically designed DYNAGRIP™ handle with finger guards for better efficiency and handling



DYNAGRIP™ END NIPPER PLIERS

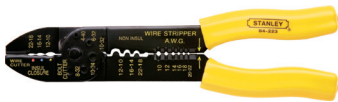


STANLEY SKU	DESCRIPTION
STHT84077-8	6" End Nipper Pliers

- Forged carbon steel jaws fully heat treated for optimum performance and durability
- Bi-material soft grip handle provides excellent comfort
- Ergonomically designed DYNAGRIP™ handle with finger guards for better efficiency and handling



CRIMPING PLIER



STANLEY SKU	DESCRIPTION
84-223-22	9" Crimping Pliers
84-253-22	9" Crimping Pliers Set

- Cuts electrical wires, strips insulation, shears screws and bolts (Warning: Grips do not protect against electrical shock.)

WIRE CUTTER



STANLEY SKU	DESCRIPTION
84-214-22	Wire Stripper
84-475-22	Wire Stripper(Cutter)-Awg12-22, 150mm-6

- Convenient hole for looping or bending wire
- Ideal for cutting, stripping speaker wire & appliance cords
- Slide adjust for various gauge wire

HEAVY DUTY DIAGONAL CUTTING PLIE



STANLEY SKU	DESCRIPTION
STHT84607-8	8" Heavy Duty Diagonal Cutting Pliers

- Forged carbon steel jaws fully heat treated for optimum performance and durability
- Induction hardened cutting edges for greater reliability in cutting

VDE PLIERS SET



STANLEY SKU	DESCRIPTION
84-011	3pcs Pliers Sets (84-001, 84-003 & 84-007)

- Safe live line working to 1,000V
- DIN / ASO / ANSI compliant
- Safe live line working to 1,000v
- Individually tested to 10,000v
- Compliant to EN60900, IEC/CEI900, VDE688
- Bi-material handle with secure grip grooving for comfort
- Hand ground, induction hardened blade for long life and accuracy
- Finger guard for better control & added user safety
- Interlocking joint assembly for smooth cutting
- DIN/ ASO/ ANSI Compliant

VDE WATER PUMP PLIERS



STANLEY SKU	DESCRIPTION
84-294	250mm/10" Water Pump Pliers (AA-01V)

- Safe live line working to 1,000V
- DIN / ASO / ANSI compliant
- Safe live line working to 1,000v
- Individually tested to 10,000v
- Compliant to EN60900, IEC/CEI900, VDE688
- Bi-material handle with secure grip grooving for comfort
- Heat treated high chrome steel forging for long life and durability
- Hand ground, induction hardened blade for long life and accuracy
- Finger guard for better control & added user safety
- Interlocking joint assembly for smooth cutting
- DIN/ ASO/ ANSI Compliant

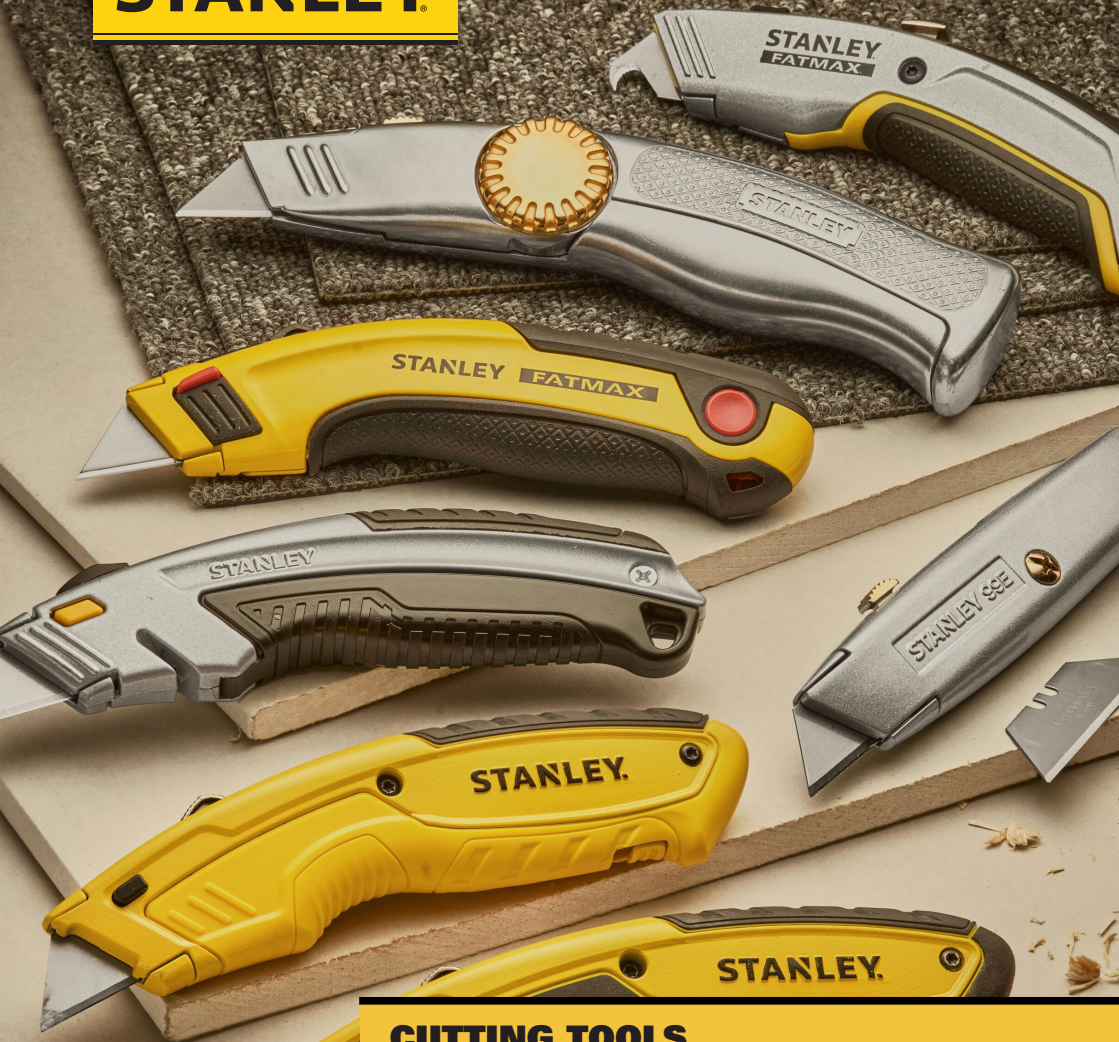
VDE COMBINATION PLIERS



STANLEY SKU	DESCRIPTION
84-001	Vde Combination Pliers 7" 180mm
84-002	Vde Combination Pliers 8" 200mm
84-004	Vde Diagonal Pliers 8" 200mm
84-006	Vde Long Nose Pliers 7" 180mm
84-007	Vde Long Nose Pliers 8" 200mm
84-009	Vde Narrow Head Diagonal Plier

- Safe live line working to 1,000V
- DIN / ASO / ANSI compliant
- Safe live line working to 1,000v
- Individually tested to 10,000v
- Compliant to EN60900, IEC/CEI900, VDE688
- Bi-material handle with secure grip grooving for comfort
- Heat treated high chrome steel forging for long life and durability
- Hand ground, induction hardened blade for long life and accuracy
- Finger guard for better control & added user safety
- Interlocking joint assembly for smooth cutting
- DIN/ ASO/ ANSI Compliant

STANLEY



CUTTING TOOLS

STANLEY manufactured its first utility knife back in 1935. We are the pioneer and innovator in this category. The STANLEY cutting tool range is built to last, to provide excellent cutting performance and to have noteworthy safety and ergonomic features.

THE MEASURE OF A PRO

www.STANLEYTOOLS.com

BOLT CUTTER



STANLEY SKU	DESCRIPTION
14-308-S	8" Bolt Cutter
14-314-S	14" Bolt Cutter - Forged Handle
14-324-S	24" Bolt Cutter - Tubular Handle
14-330-S	30" Bolt Cutter - Tubular Handle
14-336-S	36" Bolt Cutter - Tubular Handle

- A range of bolt cutters in most popular sizes
- Cutter blades are of chrome molybdenum tempered steel with cutting jaws tempered HRC 60° (FBS std)
- Special heat treatment give blades extra hardness and durability

MINI TUBING CUTTER



STANLEY SKU	DESCRIPTION
93-033-22	1/8" - 3/4" Tubing Cutter
93-021-22	1/8" - 1.1/4" Tubing Cutter
93-028-22	1/4" - 2.1/2" Tubing Cutter

- Tubing cutters for cutting copper/plastic tubing

GLASS CUTTER



STANLEY SKU	DESCRIPTION
14-125	130mm Black Iron Glass Cutter

- Die cast handle has a wide contoured comfort grip and ball end for tapping
- Steel wheel with general purpose cutting angle delivers precise scoring clean breakout, and smooth edges
- 3 Break-off notches for various depths
- Honed Cutting wheel
- Cuts glass up to 3 mm

PVC PIPE CUTTER



STANLEY SKU	DESCRIPTION
14-442-22	PVC Pipe Cutter up to 42mm

- Heavy duty PVC pipe cutter
- Stainless steel blades
- Heat treated for durability

SINGLE-SIDED PULL CUTTER



STANLEY SKU	DESCRIPTION
STHT10355	Single-Sided Pull Cutter (1 pk)

- Recessed blade helps reduce risk of injury
- Hook piercer pierces and cuts through single/double wall corrugate
- Tape splitter pierces and cuts through tape in one motion
- Lightweight design helps reduce user fatigue**
- Lanyard hang hole for easy transportation and storage

AUTO LOCK SNAP-OFF KNIFE



STANLEY SKU	DESCRIPTION
STHT10264-8	9mm TPR Auto Lock Snap-Off Knife (Rubber)
STHT10265-8	18mm ABS Auto Lock Snap-Off Knife (Plastic)
STHT10266-8	18mm TPR Auto Lock Snap-Off Knife (Rubber)

- Ergonomic design of thumb pad and neck down create comfortable grip and control
- Bi-material TPR handle with soft grip or full ABS version for durability
- Dial lock or auto slide lock for convenience and safety
- Removable blade snapper in the knife cap
- Storage of spare blades

DYNAGRIP™ UTILITY KNIFE



STANLEY SKU	DESCRIPTION
STHT10779-8	Dynagrip Retractable Utility Knife

- Tubing cutters for cutting copper/plastic tubing

QUICK POINT™ SNAP-OFF KNIFE



STANLEY SKU	DESCRIPTION
0-10-150	9mm Quick-Point Snap-Off Knife

- Light-duty, auto lock knife with Quick Point™ blades
- Durable and compact ABS body for simple storage and handling
- Blade sections snap off providing fresh and sharp cutting points
- Removable blade snapper included in the knife cap

FATMAX® UTILITY KNIFE



STANLEY SKU	DESCRIPTION
10-777	FatMax Locking Retractable Utility Knife

- Adjustable thumb-dial locking wheel holds blade in place and prevents shifting
- Swivels open for quick blade change – no tools required
- Rear blade storage for seven blades
- Ergonomically designed rubber grip fits comfortably in hand
- Light weight, durable body

CLASSIC 99® UTILITY KNIFE



STANLEY SKU	DESCRIPTION
10-099	Classic 99 Retractable Utility Knife

- Interlock® nose firmly secures the blade into the knife
- Strong and lightweight die-cast metal body, ergonomically shaped for a comfortable grip

INTERLOCK SAFETY UTILITY KNIFE



STANLEY SKU	DESCRIPTION
10-189C	Interlock Safety Utility Knife w/ Self-Retracting Round Point Blade (5-7/8")

- Spring-loaded blade retracts into knife automatically when pressure on slide button is released Interlocking nose secures blade safely between knife halves
- Orange colored for high visibility and safety

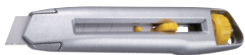
DYNAGRIP™ SNAP-OFF KNIFE



STANLEY SKU	DESCRIPTION
STHT10409-8	9mm Dynagrip Snap-Off Knife
STHT10418-8	18mm Dynagrip Snap-Off Knife

- Dynagrip series adding the new soft grip on top of durable case
- Rigid stainless steel barrel corrosion resistant and provide smooth action
- High performance blade made by Stanley® with quality and great cutting life
- Dial lock with security and firm blade control for heavy-duty cutting

INTERLOCK SNAP-OFF KNIFE



STANLEY SKU	DESCRIPTION
0-10-018	Interlock Knife S/Off BL 18mm

- Interlock nose locking system for greater safety during cutting
- Knife can be opened and cleaned - ideal for applications such as plasterboard where material build up is a problem
- Massive blade wheel lock - for heavy duty cutting
- Solvent resistant, metal body for strength

FIXED BLADE FOLDING UTILITY KNIFE



STANLEY SKU	DESCRIPTION
STHT10424-0	Fixed Blade Folding Utility Knife

- Compact size and belt clip for convenient portability
- Push button for easy blade change
- Nose of the knife features an exposed blade step to speed up blade placement

INTEGRATED SNAP-OFF KNIFES



STANLEY SKU	DESCRIPTION
STHT10500-8	18mm Mpp Integrated Snap Slide
STHT10501-8	18mm Dynagrip Snap-Off Knife

- Improved blade release control: the serrated thumbwheel allows for easy and intuitive adjustment of cutting depth
- Comfortable use: its ergonomic two-material handle gives it additional grip and reduces slipping
- Attachment loop: integrated into the body of the cutter, it ensures practical storage and increased safety when working at height

FATMAX 18MM SNAP-OFF KNIFE



STANLEY SKU	DESCRIPTION
0-10-481	FATMAX 18mm Snap Off Blade Knife

- Large blade wheel lock - for heavy duty cutting
- Notched barrel for improved blade lock
- Quick and easy blade change - no tools required
- Removable blade snapper ensures faster and safer removal of a worn segment
- Soft grip handle for comfort

SNAP-OFF 18MM KNIFE



STANLEY SKU	DESCRIPTION
STHT10276-8	18mm Basic Snap-Off Knife

- Light-duty auto lock knife with quick point™ blades
- Durable and compact ABS body for simple storage and handling
- Equipped with 18 mm Double Points blade manufacture in STANLEY® UK

RETRACTABLE BLADE UTILITY KNIFE



STANLEY SKU	DESCRIPTION
STHT10479-0	Retractable Blade Utility Knife

- Optimized grip designed for comfort
- Push button blade change for easy blade change
- Nose of the knife features an exposed blade step to speed up blade placement
- Integrated, secure 10-blade storage
- Includes (3) 11-921 Heavy Duty Utility Blades

CLASSIC 1992® HEAVY DUTY UTILITY KNIFE LADE



STANLEY SKU	DESCRIPTION
11-921H	Classic 1992 Utility Blades 10 Disp. (100pcs)
11-921T	Classic 1992 Utility Blades (10pcs)

- Heavy-duty blade, ideal for carpet and vinyl
- Replacement blade for 10-099, 10-175, 10-777, 10-779 & 10-804

INTERLOCK SAFETY UTILITY KNIFE

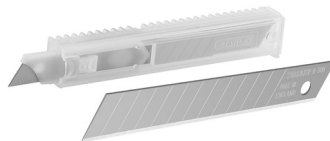
NEW



STANLEY SKU	DESCRIPTION
STHT10359	Double-Sided Pull Cutter (1 Pk)

- Optimized cutting depth cuts through single/double wall corrugate
- Tape splitter pierces and cuts through tape in one motion

QUICK POINT™ SNAP-OFF KNIFE LADE



STANLEY SKU	DESCRIPTION
11-300H	9mm S/O Knife Blades 10 Dispensers (100pcs) length 85mm
11-300T	9mm S/O Knife Blades (10pcs) length 85mm
11-301H	18mm S/O Knife Blades 10 Dispensers (100pcs)
11-301T	18mm S/O Knife Blades Q/ Point (10pcs)
0-11-325	25mm S/O Knife Blades Q/ Point (10pcs)

- Replacement blade for 10-380, 10-280, 10-418, 10-151 and other snap-off knife
- Blade with 8 cutting points

LARGE HOOKED KNIFE BLADE



STANLEY SKU	DESCRIPTION
0-11-983	1996-B Large Hooked Knife Blades (5pcs)

- With deeper hook for cutting thicker materials
- Fits most standard utility knives

PRUNING SHEARS



STANLEY SKU	DESCRIPTION
14-302-23	8" Bypass Pruning-Shears

- Blades of precision steel
- Cuts up to 18mm / 3/4" thickness
- Padded handle for comfort and reduced hand fatigue
- Safety lock feature

AVIATION SNIPS



STANLEY SKU	DESCRIPTION
14-562-22	MaxSteel Aviation Snips - LEFT
14-563-22	MaxSteel Aviation Snips - STRAIGHT
14-564-22	MaxSteel Aviation Snips - RIGHT

- Cuts up to 18 gauge (1.2mm) cold-rolled steel or 23 gauge (0.7mm) stainless-steel
- Forged chrome molybdenum steel cutting blades for strength, durability, and long cutting life
- Serrated cutting blades provides a sturdy bite and helps prevent material from slipping during use
- Latch design allows for a quick single handed operation
- Adjustment-free fasteners prevent loosening of the blades
- Color-coded, slip-resistant bi-material grip for comfort and control
- Meets or exceeds ANSI standards

TIN SNIPS



STANLEY SKU	DESCRIPTION
14-163	8" Tin Snips w/o Spring
14-164	10" Tin Snips w/o Spring
14-165	12" Tin Snips w/o Spring
14-166	14" Tin Snips w/o Spring

- Serrated cutting edges to prevent slippage when cutting
- Forged alloy steel for long life
- Single pivot action & soft grip for comfort
- Interlocking joint assembly for smooth cutting
- Heat treated high chrome steel forging for long life and durability

STRAIGHT PATTERN SNIPS



STANLEY SKU	DESCRIPTION
14-569-22	7" MaxSteel All-Purpose Straight Pattern Snips
14-566-22	10" MaxSteel All-Purpose Straight Pattern Snips
14-568-22	12" MaxSteel All-Purpose Straight Pattern Snips

- Cuts up to 20 gauge (0.91mm) cold-rolled steel or 23 gauge (0.72mm) stainless-steel
- Durable fully-polished steel blades are forged to stay sharp for long cutting life
- Adjustment-free fastener prevents loosening of the blades
- Slip-resistant double cushion grip for comfort
- Meets or exceeds ANSI standards

MINI-HACK™ UTILITY SAW



STANLEY SKU	DESCRIPTION
STHT20807-8	10" Mini Hack Utility Saw

- Durable solid plastic construction
- Ideal for hard-to-reach places
- Handle covers blade to help protect user's hands

HACKSAW TUBULAR FRAME



STANLEY SKU	DESCRIPTION
15-408	12" Hacksaw Tubular Frame

- Heavy gauge tubular steel frame nickel-plated will not tarnish or rust provides handy holding compartment for extra blades
- Easy adjustment of frame for 10" (255 mm) and 12" (305 mm) blade
- Blade can be faced in four directions
- Rugged cast handle with guard designed to protect knuckles
- Furnished with 10" (255 mm) standard carbon steel blade

HACKSAW ADJUSTABLE FRAME



STANLEY SKU	DESCRIPTION
15-565-S	10"-12" Hacksaw Adjustable Frame

- Rugged plated steel frame
- Fits 10" and 12" blades
- Comfort pistol-grip handle
- Blade Length 10" / 254mm or 12" / 305mm
- Throat Depth 2-3/4" / 70mm

HACKSAW FIXED FRAME



STANLEY SKU	DESCRIPTION
STHT20206-8	12" Hacksaw Fixed Frame - Yellow

- Comfortable full handle with patented pattern for better grip and control
- Full grip protects knuckles
- Sturdy all steel painted frame 101.6mm (4") throat depth



HACKSAW STEEL FRAME



STANLEY SKU	DESCRIPTION
15-166	12" Hacksaw Steel Frame

- Positive locking mechanism
- Two blade position 90°/55°
- Aluminium handle - 12" blades

HACKSAW ADJUSTABLE FRAME RUBBER GRIP



STANLEY SKU	DESCRIPTION
15-265-S	8"-12" Hacksaw Adjustable Frame (Rubber Grip)

- Easy adjustment of frame for 10" and 12" blades
- Rigid steel frame with molded cushion grip
- D-shape guard helps protect hands and knuckles
- Blade Length 10" / 254mm or 12" / 305mm
- Throat Depth 3-7/8" / 98mm

PLASTIC HANDLE SAW



STANLEY SKU	DESCRIPTION
STHT20081-8	20" x 67/8" Crosscut Saw

- Handle offers a square/mitre feature with 45° and 90° angles
- Contoured sturdy handle designed for comfort and control
- Full length protective sleeve

BACK SAW



STANLEY SKU	DESCRIPTION
15-509-23	13 points 14"/350mm Back Saw

- Hardened tempered steel for durability
- Contoured molded handle provides comfort and control
- Fits all Stanley mitre boxes
- Stiff steel back prevents bowing for straight cut

HEAVY DUTY BI-MATERIAL HANDSAW



STANLEY SKU	DESCRIPTION
STHT20374-LA	Heavy Duty Bi-Material Handsaw 18" (450MM)
STHT20375-LA	Heavy Duty Bi-Material Handsaw 20" (500MM)

- **Bi-Material:** Ergonomic handle anti-slip and enhanced comfort
- **Induction Hardened Teeth:** For Long Lasting Sharpness, Smooth and Clean Cuts
- **Triple Ground Teeth:** For fast and smooth cutting

BI-METAL HACKSAW BLADE



STANLEY SKU	DESCRIPTION
STHT20298-8	24T x 12" Bi-Metal Hacksaw Blade (100pcs)

- Combines the flexibility of carbon steel backs with the cutting performance of a high-speed steel cutting edge
- Cuts most metals including unhardened tool steel and stainless-steel

CLAMPING MITRE BOX WITH SAW



STANLEY SKU	DESCRIPTION
20-600	Clamping Mitre Box w/ 14" Saw

- **Fixing holes:** allows mitre box to be securely fastened to a work bench
- **Foldable legs:** allows box to sit flat on floor or work table or be butt up against a corner
- **Holes in base** for fastening to work bench
- **Integrated storage compartments:** for convenient storage of chocks and pencils
- **One-piece injection moulded:** for strength and durability



STANLEY

FASTENING TOOLS

STANLEY is one of the preeminent manufacturers of fastening tools and is responsible for helping to elevate the performance of these must-have tools.

THE MEASURE OF A PRO

www.STANLEYTOOLS.com

GLUE-MINI GUN



STANLEY SKU	DESCRIPTION
69-GR10B-23	Mini Hot Melt Glue Gun 100-240V/15W Round Pin

- Small, portable size for quick gluing jobs in tight spaces
- Trigger-feed mechanism controls glue flow
- Uses GS10DT standard mini hot melt sticks
- Fold-out stand for safe, handy storage while in use

GLUE-MINI GUN



STANLEY SKU	DESCRIPTION
69-GR20B-23	Trigger Feed Hot Melt Glue Gun 100-240V/40W Round Pin

- Small, portable size for quick gluing jobs in tight spaces
- Trigger-feed mechanism controls glue flow
- Uses GS10DT standard mini hot melt sticks
- Fold-out stand for safe, handy storage while in use

GLUEPRO™ MINI DUAL TEMP MELT GLUE GUN



STANLEY SKU	DESCRIPTION
69-GR25B-23	Trigger Feed Dual Melt Glue Gun 100-240V/80W Round Pin

- Ideal for hobbies, crafts, and repairs
- Convenient, one-touch high/low selector switch
- Uses mini dual-temperature glue on both settings and mini hot-melt on high settings
- Fold-out stand for safe, handy storage while in use

REVETER



STANLEY SKU	DESCRIPTION
STHT69646-8	Medium-duty riveter 3 nozzles for 1/8", 5/32", 3/16" rivets
STHT69800-8	Heavy-duty riveter 4 nozzles for 3/32", 1/8", 5/32", 3/16" rivets

- Spring-loaded handle ejects rivet stem automatically
- Slim-nose design fits in difficult-to-reach places
- Long handle makes riveter easy to squeeze

DUAL MELT GLUE STICKS



STANLEY SKU	DESCRIPTION
GS10DT	1/4" x 4" Dual Temperature Glue Sticks (24pack)
GS20DT	7/16" x 4" Dual Temperature Glue Sticks (24pack)

- For use in mini hot melt, low temperature, and dual temperature glue guns
- Excellent for bonding heat sensitive materials, as well as general applications

LIGHT DUTY STAPLE GUN



STANLEY SKU	DESCRIPTION
STHT70412-9	TR45 + 1000 A type 8mm staples (+Cut case of 6)

- Light duty pack with 1000 type A 8mm staples
- Metal body
- Anti jam

STAPLES



STANLEY SKU	DESCRIPTION
TRA704T	1/4" Heavy Duty Staples (1000pcs)
TRA705T	5/16" Heavy Duty Staples (1000pcs)

SOLDERING IRON



STANLEY SKU	DESCRIPTION
69-031B	30W/220V Round Pin Soldering Iron
69-033B	45W/220V Round Pin Soldering Iron
69-041B	100W/220V Round Pin Soldering Iron

- Suitable for soldering metals like copper, tin, brass and stained glass
- Working temperature reached in 2 minutes
- Slim pencil like handle for easy use and control

1000 STAPLES PACK



STANLEY SKU	DESCRIPTION
STHT72674-9	TR250 + 3000 G type 10mm staples (+Cut case of 6)

- Heavy duty pack including 3000 Staples
- 2 in 1 design
- Easy Squeeze trigger
- Anti Jam

SPARK DETECTING SCREWDRIVER



STANLEY SKU	DESCRIPTION
66-119-S	3 x 150mm Spark Testing Screwdriver
66-120-S	100-500V Spark Detecting

DIGITAL DETECTION SCREWDRIVER



STANLEY SKU	DESCRIPTION
66-133	Digital Detection Screwdriver
66-137-S	Digital Voltage Tester

- It is safe to use and easy to operate
- Made of first-class material and workmanship, exquisite, high quality and durable
- Smart design and new
- You can read the testing voltage soon after you use it

CUSHION GRIP SCREWDRIVER PHILLIPS



STANLEY SKU	DESCRIPTION
STMT60800-8	#0 x 75mm Phillips Cushion Grip S/Driver
STMT60801-8	#0 x 100mm Phillips Cushion Grip S/Driver
STMT60803-8	#0 x 150mm Phillips Cushion Grip S/Driver
STMT60806-8	#1 x 150 Phillips Cushion Grip S/Driver
STMT60807-8	#1 x 200mm Phillips Cushion Grip S/Driver
STMT60811-8	#2 x 150mm Phillips Cushion Grip S/Driver
STMT60812-8	#2 x 200mm Phillips Cushion Grip S/Driver
STMT60813-8	#2 x 250mm Phillips Cushion Grip S/Driver
STMT60814-8	#3 x 150mm Phillips Cushion Grip S/Driver
STMT60815-8	#3 x 200mm Phillips Cushion Grip S/Driver

- Bi-material (PP+TPR) soft grip handle providing excellent comfort
- Chrome Vanadium (Cr-V) blade for durability
- Magnetic tips for easy pick up and screw locator

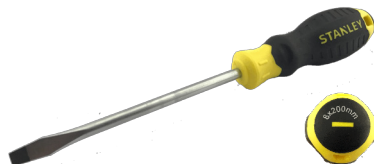
6-WAY SCREWDRIVER



STANLEY SKU	DESCRIPTION
STHT68012-8	6-Way Multi Bits Screwdriver (Quick Change)

- All-in-one screwdriver with 6 tips: #1 and #2
- Phillips®, 1/4" and 3/16" Slotted, 1/4" and 5/16" Nut Driver
- Ergonomically designed bi-material handle for superb comfort
- Tri-lobe shape fits hand comfortably
- Soft, diamond textured handle provides a firm grip for extra torque without strain
- Available in an attractive 24 piece merchandiser
- Slip resistant rubber grip provides comfort

CUSHION GRIP SCREWDRIVER SLOTTED



STANLEY SKU	DESCRIPTION
STMT60817-8	3mm x 75mm Slotted Cushion Grip S/Driver
STMT60818-8	3mm x 100mm Slotted Cushion Grip S/Driver
STMT60820-8	3mm x 150mm Slotted Cushion Grip S/Driver
STMT60821-8	5mm x 75mm Slotted Cushion Grip S/Driver
STMT60822-8	5mm x 100mm Slotted Cushion Grip S/Driver
STMT60823-8	5mm x 150mm Slotted Cushion Grip S/Driver
STMT60826-8	6.5mm x 100mm Slotted Cushion Grip S/Driver
STMT60827-8	6.5mm x 125mm Slotted Cushion Grip S/Driver
STMT60830-8	6.5mm x 250mm Slotted Cushion Grip S/Driver
STMT60832-8	8mm x 200mm Slotted Cushion Grip S/Driver
STMT60833-8	8mm x 250mm Slotted Cushion Grip S/Driver
STMT60816-8	#3 x 250mm Phillips Cushion Grip S/Driver

- Bi-material (PP+TPR) soft grip handle providing excellent comfort
- Chrome Vanadium (Cr-V) blade for durability
- Magnetic tips for easy pick up and screw locator

2PCS C/GRIP SCREWDRIVER SET



STANLEY SKU	DESCRIPTION
STMT66670	2pcs Cushion Grip S/Driver Set

- Package includes:
- Cushion Grip S/Driver PH2 x 100mm
- Cushion Grip S/Driver Slotted 6.5mm x 100mm

4PCS C/GRIP SCREWDRIVER SET



STANLEY SKU	DESCRIPTION
STMT66671	4pcs Cushion Grip S/Driver Set

- Package includes:
- Cushion Grip S/Driver PH1 x 100mm
- Cushion Grip S/Driver PH2 x 150mm
- Cushion Grip S/Driver Std Parallel 5mm x 100mm
- Cushion Grip S/Driver Slotted 6.5mm x 100mm

6PCS C/GRIP SCREWDRIVER SET



STANLEY SKU	DESCRIPTION
STMT66672	6pcs Cushion Grip S/Driver Set

- Package includes:
- Cushion Grip S/Driver PH1 x 100mm
- Cushion Grip S/Driver PH2 x 150mm
- Cushion Grip S/Driver Std Parallel 5 x 100mm
- Cushion Grip S/Driver Std Parallel 5 x 150mm
- Cushion Grip S/Driver Slotted 5 x 100mm
- Cushion Grip S/Driver Slotted 6.5 x 150mm

6PCS C/GRIP SCREWDRIVER SET SET W/ BONUS



STANLEY SKU	DESCRIPTION
STMT66679	6pcs Cushion Grip S/Driver Set w/Bonus

- Package includes:
- Cushion Grip S/Driver PH1 x 100mm
- Cushion Grip S/Driver PH2 x 38mm
- Cushion Grip S/Driver PH2 x 100mm
- Cushion Grip S/Driver Slotted 5 x 100mm
- Cushion Grip S/Driver Slotted 6.5 x 38mm
- Cushion Grip S/Driver Slotted 6.5 x 100mm
- Digital Voltage Tester (Bonus)

8PCS C/GRIP SCREWDRIVER SET



STANLEY SKU	DESCRIPTION
STMT66673	8pcs Cushion Grip S/Driver Set

- Package includes:
- Cushion Grip S/Driver PH0 x 75mm
- Cushion Grip S/Driver PH1 x 100mm
- Cushion Grip S/Driver PH2 x 38mm
- Cushion Grip S/Driver PH2 x 150mm
- Cushion Grip S/Driver Slotted 3mm x 75mm
- Cushion Grip S/Driver Slotted 5mm x 100mm
- Cushion Grip S/Driver Slotted 6.5mm x 38mm
- Cushion Grip S/Driver Slotted 6.5mm x 150mm

17PCS SCREWDRIVER SET



STANLEY SKU	DESCRIPTION
STMT65616-LA	17pcs C grip screwdriver set

- Package includes:
- 15pcs Screwdriver CRV blade, black tipping with magnetic tip. Hardness: 52-58HRC
- 5pcs Phillips: PH2X1-1/2", PH1X3", PH2x4", PH3X6" PH0X2-1/2"(pocket screwdriver)
- 2pcs square: S1X4", S2X4" 5pcs Slotted: 1/4"X1-1/2", 3/16"X3", 1/4"X4", 5/16"X6", 1/8"X2- 1/2"(pocket screwdriver)
- 3pcs Torx: T15X3", T20X4", T25X4"
- 2pcs off set
- 6pcs precision screwdriver in plastic case
- 13pcs Hexkey
- 1pc nylon bag

35 IN 1 SCREWDRIVER SET



STANLEY SKU	DESCRIPTION
70-885	35 in 1 Screwdriver Set

- Material: Steel
- Magnetic bit holder for quick and secure changeover
- A Rubber Moulded Handle For Extra Comfort
- The Unique Case Holds Bits In Place That Would Otherwise Be Lost, Providing A Secure Storage Solution
- Rubber molded handle for added comfort

2-WAY CUSHION GRIP MULTI BITS SCREWDRIVERMETAL



STANLEY SKU	DESCRIPTION
65-201	2-Way Multi Bits Screwdriver (Quick Change)

- Spring-loaded handle ejects rivet stem automatically
- Slim-nose design fits in difficult-to-reach places
- Long handle makes riveter easy to squeeze

SHELL PRECISION
SCREWDRIVER SET

NEW



STANLEY SKU	DESCRIPTION
STHT60090-8	Shell Precision Screwdriver Set

- 1x screwdriver with extension bar - 1x flex extension bar
- Philips ph000, ph00, ph0, ph1, ph2
- Philips ph000, ph00, ph0, ph1
- Slotted 1mm, 1.5mm, 2mm, 2.5mm, 3mm, 3.5mm, 4mm
- Hex h0.7, h0.9, h1.3, h1.5, h2, h2.5, h3
- Hex h3.5, h4, 4.5, h5, h6
- Torx t3, t4, t5, t6, t7, t8, t9, t10, t15, t20
- Socket 2.5mm, 3 mm, 3.5 mm, 4mm, 5 mm
- Yo,1
- Star p2, p5, p6
- Square#0, 1, 2 -triangle 3
- Point 0.8
- Magnet

TANG THROUGH
SCREWDRIVER PHILLIPS



STANLEY SKU	DESCRIPTION
STMT61880	Tange Thru Screwdriver PH2 x 4
STMT61882	Tange Thru Screwdriver PH2 x 6
STMT61886	Tange Thru Screwdriver PH3 x 12

- Heavy-duty purpose
- Material: Chrome vanadium hardness : 56-62
- Anti-slip design handle
- 18% bigger impact surface

48PCS SCREWDRIVER
SET + BAG

NEW



STANLEY SKU	DESCRIPTION
STHT0-70887	48pcs Screwdriver Set + Bag

- Sets Breakup: It contains
- 5 flat screwdrivers: 3x75mm, 5x100mm, 6x38mm, 6x100mm, 8x150mm
- 4 Phillips screwdrivers: 0x75mm, 1x75mm, 2x38mm, # 2x100mm
- 18 tubes: 5mm, 6mm, 7mm, 8mm, 9mm, 10mm, 11mm, 12mm, 13mm, 3/16 ", 7/32", 1/4 ", 5/16", 11/32 ", 3/8", 7/16 ", 15/32", 1/2 "
- 1 Adapter
- 1 multi-point screwdriver
- 19 points:
- Torx: T5, T7, T10, T15, T20, T25, T30, T40
- Hex: 4mm, 5mm, 5.5mm, 6mm
- Phillips: # 0, # 1, # 2, # 3
- Standard: 4mm, 5mm, 6mm

TANG THROUGH
SCREWDRIVER



STANLEY SKU	DESCRIPTION
STMT61889	Tange Thru Screwdriver 6mm x 4
STMT61891	Tange Thru Screwdriver 6mm x 6
STMT61893	Tange Thru Screwdriver 8mm x 8
STMT61895	Tange Thru Screwdriver 8mm x 12

- Heavy-duty purpose
- Material: Chrome vanadium hardness : 56-62
- Anti-slip design handle
- 18% bigger impact surface

9-WAY SCREWDRIVER



STANLEY SKU	DESCRIPTION
STHT62511-8	9-Way Screwdriver

- Interchangeable bars maximize versatility
- Includes: 1/8" Standard Bar, 3/16" Standard Bar, 1/4" Standard Bar, 0pt Phillips® Bar, 1pt Phillips® Bar, 2pt Phillips® Bar, 1 Tack Puller, 1 Brad Awl, 1 Hook Driver

6 PCS METAL PRECISION SCREWDRIVER SET METAL



STANLEY SKU	DESCRIPTION
STHT66039-8	6 pcs Precision Screwdriver Set

- Swivel-head handles provide tightening precisely
- Bright, plated shafts are fluted for a steady, solid grip
- Hardened and tempered steel blades with blued finish to resist corrosion
- Plastic storage case included

6 PCS BI-MAT PRECISION SCREWDRIVER SET



STANLEY SKU	DESCRIPTION
STHT66052-8	6 pcs Bi-Mat Precision Screwdriver Set

- Swivel-head handles provide tightening precisely
- Tough, plastic handles with soft cushion grip for comfort
- Plastic storage case included

VDE SCREWDRIVER SET



STANLEY SKU	DESCRIPTION
65-980-22	Vde 6pcs Set With Bonus

- Each screwdriver is individually tested to 10,000V in a water bath for
- Hardness and torque exceed ISO / DIN standards
- Ergonomic, shock resistant, anti slip handle - for greater torque to be

RATCHETING MULTIBIT SCREWDRIVER



STANLEY SKU	DESCRIPTION
STHT68010-8	10pcs Ratcheting Multibit Screwdriver

- Includes:
- 3/16" Standard, 1/4" Standard, 1pt
- Phillips®, 2pt Phillips®, T15 Torx, T20 Torx, 1pt Pozi, 2pt Pozi, 1pt Square, 2pt Square, Storage Rack
- Includes: 3/16" Standard, 1/4" Standard, 1pt Phillips®, 2pt Phillips®, T15 Torx, T20 Torx, 1pt Pozi, 2pt Pozi, 1pt Square, 2pt Square, Storage Rack

RING HEX KEY SET



STANLEY SKU	DESCRIPTION
69-213	10 pcs Ring Metric Hex Key Set (Black) 1.5, 2, 2.5, 3, 4, 5, 5.5, 6, 8, 10mm
69-230	10pcs Ring Imperial Hex Key Set (Black) 1/16, 5/64, 3/32, 1/8, 5/32, 3/16, 7/32, 1/4, 5/16, 3/8"

LONG SPHERICAL HEX KEY SET



STANLEY SKU	DESCRIPTION
STHT69310-8	6pcs Long Spherical Hex Key Set
STHT69311-8	7pcs Long Spherical Hex Key Set
STHT69312-8	8pcs Long Spherical Hex Key Set

LONG HEX KEY SET



STANLEY SKU	DESCRIPTION
STHT69313-8	6pcs Long Hex Key Set
STHT69314-8	7pcs Long Hex Key Set
STHT69315-8	8pcs Long Hex Key Set

EXTRA LONG HEX KEY SET



STANLEY SKU	DESCRIPTION
STMT94158-8-23	9 pcs Extra Long Spherical Metric Hex Key Set

FOLDING TORX KEY SET



STANLEY SKU	DESCRIPTION
69-263	8 pcs Folding Torx Key Set

HEX KEY SET



STANLEY SKU	DESCRIPTION
69-253	10 pcs Metric Hex Key Set (Black) 1.5, 2, 2.5, 3, 4, 5, 5.5, 6, 8, 10mm
69-254	10 pcs Imperial Hex Key Set (Black) 1/16, 5/64, 3/32, 1/8, 5/32, 3/16, 7/32, 1/4, 5/16, 3/8"

LONG ARM HEX KEY SET



STANLEY SKU	DESCRIPTION
69-256	9 pcs Metric Long Arm Ballpoint Hex Key Set 1.5/2/2.5/3/4/5/6/8/10 mm – Ball tips
69-257	12 pcs Metric Long Arm Ballpoint Hex Key Set 1/16, 5/64, 3/32, 7/64, 1/8, 9/64, 5/32, 3/16, 7/32, 1/4, 5/16, 3/8" – Ball tips

FOLDING HEX KEY SET



STANLEY SKU	DESCRIPTION
69-260	5 pcs Folding Imperial Hex Key Set (Black & Plastic Package) 3/16, 7/32, 1/4, 5/16, 3/8"
69-262	7 pcs Folding Metric Hex Key Set (Black & Plastic Package) 1.5, 2, 2.5, 3, 4, 5, 6mm
69-259	9 pcs Folding Imperial Hex Key Set (Black & Plastic Package) 5/64, 3/32, 7/64, 1/8, 9/64, 5/32, 3/16, 7/32, 1/4"



STANLEY®

FINISHING TOOLS

STANLEY is proud of its long-standing commitment to manufacturing some of the world's best finishing tools. As you peruse this category, remember that behind every finishing tool is more than 140 years of tool-manufacturing experience, skill, and of course, Stanley's unflinching commitment to excellence.

THE MEASURE OF A PRO

www.STANLEYTOOLS.com

HANDYMAN PLANE



STANLEY SKU	DESCRIPTION
1-12-203	Handyman Bench Plane (210mm)
1-12-204	Handyman Bench Plane (250 x 50mm)

BAILEY® PROFESSIONAL PLANE



STANLEY SKU	DESCRIPTION
1-12-004	Bailey® Professional Smoothing Plane (250 x 50mm)
1-12-006	Bailey® Professional Fore Plane (455 x 60mm)Rum
1-12-007	Bailey® Professional Jointer Plane (560 x 60mm)

BLOCK PLANE



STANLEY SKU	DESCRIPTION
1-12-102	#102 Block Plane (140 x 34mm)

- Small block plane - ideal for use by model makers

BLOCK PLANE



STANLEY SKU	DESCRIPTION
1-12-060	#60-1/2 Block Plane (150 x 35mm)

- Low angle cutter seats at 13-1/2°
- For end grain and plastic laminates

BLOCK PLANE



STANLEY SKU	DESCRIPTION
1-12-020	#9-1/2 Block Plane (160 x 40mm)

- For stock removal and truing up long edges or leveling wide boards

BLOCK PLANE



STANLEY SKU	DESCRIPTION
1-12-220	#220 Adjustable Block Plane (178 x 40mm)

- Adjustable for depth of cut and alignment
- General purpose

N 4 BENCH PLANE



STANLEY SKU	DESCRIPTION
1-12-136	No. 4 SweetHeart™ Smoothing Bench Plane (250 x 50mm) - Wood Handle

- Iron is made from extra-thick 1/8" (3.18 mm) A2 steel for excellent edge retention
- One-piece base and frog virtually eliminate chatter
- Cherry wood handle and knob for comfort
- Norris-type adjuster with lateral locking feature
- Adjustable throat plate for different types of wood

BLOCK PLANE BLADE REPLACEMENT



STANLEY SKU	DESCRIPTION
0-12-508	Block Plane Blade for 1-12-020/220
0-12-504	Block Plane Blade for 1-12-060 1.1/8"

SURFORM BLOCK PLANE



STANLEY SKU	DESCRIPTION
5-21-399	Surform Block Plane

MINI ROLLER REFILL



STANLEY SKU	DESCRIPTION
5-29-078	Pack of 10 Mini Roller Refill Acrylic
5-29-816	Pack of 10 Mini Roller Refill

STANLEY



ELECTRONIC DEVICES & LASERS

From groundworks upwards, starting with the basics is essential to the smooth running of every construction project.

The **STANLEY** laser level range provides every type of laser tool designed for pinpoint accuracy from small to large distances, inside and out.

THE MEASURE OF A PRO
www.STANLEYTOOLS.com

4V1H RED MULTILINE LASER + TRIPOD (KIT BOX)



STANLEY SKU	WORKING RANGE	ACCURACY
STHT77513-8	10m	± 2mm @10m
IP RATING	WORKING RANGE WITH DETECTOR	LEVELING TYPE
IP 54	50m	Line

- Operating distance up to 10 meters and 50 meters with a receiver.
- Automatic centering system Pendulum lock button Help to prevent damage during transport.
- Low tolerance ± 0.2 mm / m.

AL24 GVP LEVELLING SET



STANLEY SKU	WORKING RANGE	ACCURACY
1-77-160	90m	± 1.6mm @45m
IP RATING	LASER DIODE(S)	LEVELING TYPE
IP 54	24 Times Magnification	Manual

- Large effective aperture with 30 cms minimum range
- 1:100 Stadia for estimating distance 24x Magnification
- Easy-to-read horizontal scale
- Sealed, dust-protected leveling screws
- 5/8" x 11 threads to fit standard tripods
- Prism - Makes it easier to view the bubble

AL32 FATMAX AUTOMATIC OPTICAL LEVEL



STANLEY SKU	WORKING RANGE	ACCURACY
1-77-245	1m-107m	± 1.6mm @75m
IP RATING	LASER DIODE(S)	LEVELING TYPE
IP 54	24 Times Magnification	Manual

- 32x automatic optical level for larger site setting out and levelling
- Precision optics ensure accurate measurement over long distances
- Large easy to use focusing knob
- 1:100 Stadia for estimating distance
- Sealed, dust & water protected for working in all condition (IP54)

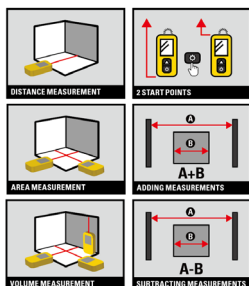
TLM30 POCKET LASER DISTANCE MEASURER



STANLEY SKU	WORKING RANGE	ACCURACY	BATTERY TYPE
STHT77425	0.15 – 9m	± 6mm @9m	Li-Ion

- Capture measurements on the go with the STANLEY TLM30 Pocket Laser Distance Measurer.
- The Pocket size is easy to carry and 9m range is great for most interior measurements.
- Continuous measurement
- One Button Operation

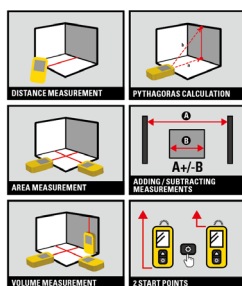
20M / 65FT LASER DISTANCE MEASURER



STANLEY SKU	MEASURING RANGE	AUTO POWER SAVING	POWER SOURCE
STHT77065-0	20M / 65Ft	120 secs (Laser) 180 secs (Screen)	2 x AAA Batteries (inc)

- 20m / 65ft Measuring Range with +/-3mm @10m accuracy and a visible range of 20m
- Ease – to – Use 2 Button Operation ON/ measure button for taking measurement COG button for changing function
- 2 Points measurement system, measurement can be taken from either the top or base of unit. For flexibility in different measuring scenarios

30M / 100FT LASER DISTANCE MEASURER



STANLEY SKU	MEASURING RANGE	AUTO POWER SAVING	POWER SOURCE
STHT77100-0	30M / 100Ft	120 secs (Laser) 180 secs (Screen)	2 x AAA Batteries (inc)

- 30m / 100ft Measuring Range with +/-3mm @10m accuracy and a visible range of 30m
- Ease – to – Use 2 Button Operation ON/ measure button for taking measurement COG button for changing function
- 2 Points measurement system, measurement can be taken from either the top or base of unit. For flexibility in different measuring scenarios

TLM165 50M LASER DISTANCE MEASURER



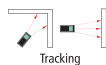
Distance



Area



Volume



Tracking



Pythagoras Height



Combined Height

STANLEY SKU	WORKING RANGE	ACCURACY	IP RATING
-------------	---------------	----------	-----------

STHT1-77139	0.15 - 50m	± 1.5mm @10m	IP 54
-------------	------------	--------------	-------

- Measures distance; Calculates area, volume, and pythagoras.
- Continuous measurement to help find target distance quickly and easily
- Addition and subtraction for calculating consecutive measurements
- 5 memory storage function

TLM330 100M LASER DISTANCE MEASURER



Distance



Partial Height



Area



Volume



Stake Out



Height Tracking



Combined Height



Pythagoras Height



Tracking



Distance with Obstruction



Triangular Area

STANLEY SKU	WORKING RANGE	ACCURACY	IP RATING
-------------	---------------	----------	-----------

STHT1-77140	0.05m - 100m	± 1.0mm	IP 54
-------------	--------------	---------	-------

- Measures distance; Calculates area, volume, and Pythagoras (1, 2, 3).
- Continuous measurement to help find target distance quickly and easily
- Addition and subtraction for calculating consecutive measurements
- 20 memory storage function

LASER TRIPOD



STANLEY SKU

BOX QTY

1-77-201

2

- Compact & stable laser tripod with camera thread
- Adjustable height from 44cm - 119cm
- Threading 1/4"

RED LASER GLASSES



STANLEY SKU

BOX QTY

1-77-171

1

- Suitable for red laser
- Designed to enhance the brightness of the laser line



STANLEY®

LAYOUT TOOLS

Straight lines and angles will never be a problem again, not if **STANLEY** is involved. For over 150 years, **STANLEY** has been perfecting and making layout tools. Featuring levels, squares and chalk line markings, this category promises precision and distinction.

THE MEASURE OF A PRO

www.STANLEYTOOLS.com

PLASTIC MAGNETIC TORPEDO LEVEL 3 VIAL



STANLEY SKU	DESCRIPTION
STHT42264-8	9" Plastic Magnetic Torpedo Level

- High-impact ABS body provides durability
- Clear visibility from above because of topreading vial
- Tinted 360° vials to provide distinct readability



I-BEAM THRIFTY LEVEL



STANLEY SKU	DESCRIPTION
STHT42072-8	12" I-Beam Thrifty Level w/ 3 Vials
STHT42073-8	18" I-Beam Thrifty Level w/ 3 Vials
STHT42074-8	24" I-Beam Thrifty Level w/ 3 Vials
STHT42075-8	36" I-Beam Thrifty Level w/ 3 Vials

- Durable, lightweight aluminum construction for all purpose use
- Yellow vial covers increase visibility and readability
- Comfortable hand holes for easy handling



CLASSIC BOX-BEAM LEVEL



STANLEY SKU	DESCRIPTION
STHT43102-8	16" / 40cm Classic Box Beam Level w/ 2 Vials
STHT43103-8	24" / 60cm Classic Box Beam Level w/ 2 Vials
STHT43104-8	30" / 80cm Classic Box Beam Level w/ 2 Vials
STHT42075-8	48" / 120cm Classic Box Beam Level w/ 3 Vials
STHT42798	Standard Box Beam 24"/60cm

- Soft material used to make shock absorbing end caps
- Excellent accuracy with 2 plumb vials for easy readability
- Strong yet lightweight aluminum frame
- Milling surface to provide better accurate measurement

ABS LEVEL METRIC/IMPERIAL



STANLEY SKU	DESCRIPTION
STHT42467-8	18" Abs Level Metric/Imperial

- Measuring scale adds utility
- Non-marring material helps prevent damage to finished surfaces
- Top-read center vial for improved readability

FATMAX™ I-BEAM LEVEL



STANLEY SKU	DESCRIPTION
43-554	24" / 60cm FatMax I-Beam Magnetic Level

- Ergonomic Aluminum body removes excess dirt and prolongs life
- Magnified center vial for increased user comfort
- Vials with accuracy of 0.5mm/m for improved exactness
- MaxEdge center vial : bridged center vial for continuous marking surface
- Pencil clip included for convenient marking
- Shock absorbing end capes makes it long lasting and shock resistant



Shock Absorbing End Capes



MaxEdge Center Vial



Straight Edge for Fast Measurements

CLASSIC MAGNETIC BOX-BEAM LEVEL



STANLEY SKU	DESCRIPTION
STHT1-43117	200cm Classic Magnetic Box Level

STANLEY® RAFTER / ROOFING SQUARE



STANLEY SKU	DESCRIPTION
45-530	Steel Rafter/Roofing Square Metric

- Embossed graduations and figures on workhardened steel
- Metric roofing table
- Buffed finish with a clear lacquer that resists rust

TRY SQUARE PROFESSIONAL



STANLEY SKU	DESCRIPTION
STHT46530-8	6" / 152mm Try Square Professional
STHT46532-8	8" / 203mm Try Square Professional
STHT46534-8	10" / 254mm Try Square Professional
STHT46536-8	12" / 305mm Try Square Professional

- Try square with stamped graduations and figures
- Cast Zinc handle
- Metric/Imperial marking on ruler

STANLEY® STEEL CARPENTER SQUARE



STANLEY SKU	DESCRIPTION
45-500 (Imperial)	Steel Carpenter Square Imperial
45-600	Steel Carpenter Square Metric-Imperial

- Tempered steel designed for durability
- Deep graduations for easy reading on face and back
- Surface protected with a clear finish that resists rust
- Reverse reading scale makes measuring more efficient

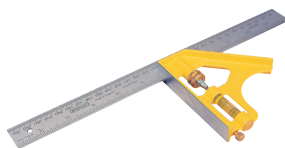
CHALK LINE



STANLEY SKU	DESCRIPTION
47-440	30m / 100' Chalk Line Reel
47-443	30m Chalk Line Set

- Stainless steel end hook for added durability and rust prevention
- High impact ABS case for durability
- Sliding door for quick and easy refill

COMBINATION SQUARE



STANLEY SKU	DESCRIPTION
46-028	12" Die-Cast Combination Square Metric

- Try square with stamped graduations and figures
- Cast zinc handle
- Metric / Imperial marking on ruler

POWERWINDER CHALK LINE SET



STANLEY SKU	DESCRIPTION
47-465	Powerwinder Chalk Line Set (Red Chalk)

- Kit contains one 100ft (30m) polypropylene chalk reel and 4oz (113gm) chalk container with blue chalk
- 3 1/2 to 1 gear ratio for 3.5 times faster rewind
- ClearView case to see the amount of chalk left inside
- Case holds 45g chalk
- Weight and style combination provides plumb bob utility
- Stainless steel end hook does not rust
- Sliding door for quick and easy refill

STANLEY®



MATERIAL HANDLING

Designed for the challenges of real working environments, every **STANLEY®** truck combines user friendly features with rugged build quality for safe, easy and secure moving, whatever the load.

THE MEASURE OF A PRO

www.STANLEYTOOLS.com

STEEL MULTI TRUCK



Side view

STANLEY SKU	DESCRIPTION	CAPACITY (KG)	WEIGHT (KG)
STST98372	STANLEY MT519 Multi Truck	150 / 200	13,6
OVERALL DIMINTIONS		LOADPLATE SIZE	WHEELS
460 mm X 580 mm X 1435 mm		355 mm X 850 mm	260 mm Solid PU

- Easy and secure handling with this steel hand truck and extra large loading platform for commercial use.
- Made of durable steel. Guides on the back allow for easy handling on large obstacles like stairs. Large pneumatic wheels allow for easy movement in indoor and outdoor situations.
- Move your heavy loads, boxes, furniture easy and safely. Heavy duty castors allow for precise steering in platform modus.
- Available with both pneumatic and solid PU wheels

STEEL HAND TRUCKS



Side view

STANLEY SKU	DESCRIPTION	CAPACITY (KG)	WEIGHT (KG)
STST98367	STANLEY HT523 Steel Hand Truck	200	13,8
OVERALL DIMINTIONS		BASEPLATE SIZE	WHEELS
590 mm x 520 mm x 1190 mm		305 mm X 240 mm	3X 150 mm PP

- Made of tough steel for added strength and durability
- Move heavy loads, boxes, furniture easily and safely
- Ergonomic handles with knuckle covers
- Available with both pneumatic and solid PU wheels

STEEL FOLDING HAND TRUCKS



Folded standard view

STANLEY SKU	DESCRIPTION	CAPACITY (KG)	WEIGHT (KG)
STST98370	STANLEY FT521 Folding Hand Truck	120	15
FOLDED / UNFOLDED DIMINTIONS		BASEPLATE SIZE	WHEELS
430 mm X 480 mm X 800 mm 660 mm X 480 mm X 1130 mm		310 mm X 290 mm	3X 150 mm TPR

- Made of tough steel for added strength and durability
- Top frame slides into bottom frame for convenient storage and include knuckle protection
- Move heavy loads, boxes, furniture easily and safely
- Ergonomic handles with knuckle covers

FOLDING HAND TRUCKS



Folded standard view



STANLEY SKU	DESCRIPTION	CAPACITY (KG)	WEIGHT (KG)
STST98070	STANLEY FT501 Folding Hand Truck with Basket Holder	70	3,3
FOLDED / UNFOLDED DIMENSIONS		BASEPLATE SIZE	WHEELS
385 mm X 56 mm X 635 mm 400 mm X 410 mm X 1000 mm		390 mm X 280 mm	127 mm TPR+PP

- Folds and opens in seconds
- Easy to use and store and comes 100% fully assembled
- Compact design made of lightweight and durable aluminum
- Major plastic stress points made of durable plastic
- Soft grip handle for added comfort

- Folds and opens in seconds. Easy to Use and Store
- Comes 100% fully assembled
- Made of strong durable steel
- Major plastic stress points are made of durable nylon; other pieces are polypropylene

STANLEY SKU	DESCRIPTION	CAPACITY (KG)	WEIGHT (KG)
STST98023	STANLEY FT584 Folding Stair Climber	30 / 60	3,5
FOLDED / UNFOLDED DIMENSIONS		BASEPLATE SIZE	WHEELS
390 mm X 67 mm X 725 mm 410 mm X 410 mm X 1020 mm		390 mm X 290 mm	3X 55 mm TPR+PP

2-IN-1 FOLDING TRUCK



Side view

STANLEY SKU	DESCRIPTION	CAPACITY (KG)	WEIGHT (KG)
STST98375	STANLEY SXWTD-FT585 2-in-1 Folding Truck	70 / 137	7,4
FOLDED / UNFOLDED DIMENSIONS		BASEPLATE SIZE	WHEELS
389 mm X 117 mm X 643 mm 780 mm X 450 mm X 920 mm 450 mm X 416 mm X 1100 mm		388 mm X 231 mm 571 mm X 382 mm	86,6 mm TPR+PP

- Easy-to-Use Versatile Utility Cart
- Strong and Durable Design
- Made of strong and durable steel
- Takes Seconds to Open and Close
- Major plastic stress points are made of durable nylon; other plastic pieces are polypropylene
- Hand truck and platform cart in one

A woman with blonde hair tied back, wearing safety glasses and a green shirt, is holding a yellow and black Stanley tape measure against a wooden wall. The tape measure is extended, showing measurements in feet and inches. The Stanley logo is visible on the tape measure's housing.

STANLEY®

MEASURING TOOLS

STANLEY is the pioneer in measuring tools. We invented the first steel tape rules in 1930. In 1963, the classic D-shaped PowerLock® design was introduced. It had the world's first coil-able spring and sliding lock, elements that continue to be the core of modern day designs. PowerLock® was also a part of Apollo 11's Lunar Landing Gear in 1969.

THE MEASURE OF A PRO

www.STANLEYTOOLS.com

MEASUREMENT TAPE



STANLEY SKU	DESCRIPTION
STHT33989-840	5m/16' x 19mm Metric/Imperial
STHT33994-840	8m/26' x 25mm Metric/Imperial

- High-impact ABS case for durability
- Corrosion-resistant Tru-Zero® end hook for accurate measurements

RUBBERGRIP® TAPE RULES



STANLEY SKU	DESCRIPTION
30-611L	3.5m Rubber Grip Bi-Material Tape

- Exclusive cushion grip built into case for comfortable non-slip and impact resistance
- Lacquered blade for maximum durability
- Improved blade readability with high contrast colour easy to read in all lighting conditions
- Massive bumper designed for increased hook life

TYLON™ TAPE RULES



STANLEY SKU	DESCRIPTION
STHT36193	3m x 13mm Tylon Tape
STHT36194	5m x 19mm Tylon Tape
STHT36195	8m x 25mm Tylon Tape
STHT36194L	5m/16in. x 19mm Tylon Short Tape Tray Pack

- Tylon coated blade provides anti-glare readings
- Soft touch case
- Tru-Zero® hook for accurate internal and external measurements

POWERLOCK® TAPE RULES



STANLEY SKU	DESCRIPTION
STHT33215-8	3.5m x 13mm Powerlock Tape
STHT33158-8	5m x 19mm Powerlock Tape
STHT33463-8	10m x 25mm Powerlock Tape
STHT33463-8	10m x 25mm Powerlock Tape

- High impact chrome ABS case for tough onsite jobs
- Mylar polyester lm extends life of entire blade
- Corrosion-resistant Tru-Zero® hook for accurate measurements



CONTROL-LOCK
TAPE MEASURE

NEW



STANLEY SKU	DESCRIPTION
STHT37235-5	Control-Lock 5m/16"X25mm Tape Measure Mag.
STHT37236-5	Control-Lock 8m/26"X25mm Tape Measure Mag.

- Durable, rubber-overmoulded case to help withstand multiple drops at the jobsite.
- Integrated finger brake for ultimate control ensuring more controlled measurements and longer tape's life.
- Improved blade durability: First 8cm treated with BladeArmor® coating to reinforce the most vulnerable part of the blade and reduce the risk of kinks or tears and
- Mylar coat for all the blade.
- Double-sided blade print facilitates awkward or overhead measurements.
- Detachable magnet and multi-catch hook ensure ultimate versatility for use on all surface
- Greater reach: 25mm Blade width and extended reach of 3.5 Meters to help you measure confidently from a distance, even when working alone.
- New compact & lightweight design for better grip and added comfort and usability.

KEYRING "POWERLOCK"



STANLEY SKU	DESCRIPTION
0-39-055	Keyring Powerlock 1m

- High impact chrome ABS case for tough onsite jobs
- Mylar polyester 1m extends life of entire blade
- Corrosion-resistant Tru-Zero® hook for accurate measurements

FIBERGLASS BLADE LONG
TAPE RULES



STANLEY SKU	DESCRIPTION
STHT34260-8	15m / 50' Long Tape Closed Fiberglass Blade
STHT34262-8	30m / 100' Long Tape Closed Fiberglass Blade
STHT34263-8	50m / 165' Long Tape Closed Fiberglass Blade

- High-impact case for durability
- Reinforced fiberglass blade for accurate measurements
- High visibility case make it easy to detect on the job



STEEL BLADE LONG TAPE
RULES



STANLEY SKU	DESCRIPTION
STHT34791-8	30m / 100' Open Reel Fiberglass Blade Long Tape
STHT34794-8	60m / 200' Open Reel Fiberglass Blade Long Tape

- Double sided blade graphics for an easy read
- Corrosion-resistant Tru-zero folding end hook for accurate measurements
- Grip handle for comfortable portage





STANLEY®

MECHANIC TOOLS

Manufactured for use with air or electric power impact tools the **STANLEY** AUTOMOTIVE Impact Standard Socket range are designed to stand up to extreme stresses - even in the toughest conditions.

THE MEASURE OF A PRO

www.STANLEYTOOLS.com

DEEP IMPACT SOCKET



STANLEY SKU	DESCRIPTION
STMT73444-8B	3/8" Deep Impact Socket 8mm
STMT73445-8B	3/8" Deep Impact Socket 9mm
STMT73448-8B	3/8" Deep Impact Socket 12mm
STMT73450-8B	3/8" Deep Impact Socket 14mm

IMPACT STANDARD SOCKET



STANLEY SKU	DESCRIPTION
STMT89436-8B	1/2" Impact Standard Socket 9 mm
STMT89437-8B	1/2" Impact Standard Socket 10 mm
STMT89438-8B	1/2" Impact Standard Socket 11 mm
STMT89439-8B	1/2" Impact Standard Socket 12 mm
STMT89440-8B	1/2" Impact Standard Socket 13 mm
STMT89441-8B	1/2" Impact Standard Socket 14 mm
STMT89442-8B	1/2" Impact Standard Socket 15 mm
STMT89443-8B	1/2" Impact Standard Socket 16 mm
STMT89444-8B	1/2" Impact Standard Socket 17 mm
STMT89447-8B	1/2" Impact Standard Socket 20 mm
STMT89449-8B	1/2" Impact Standard Socket 22 mm
STMT89450-8B	1/2" Impact Standard Socket 23 mm
STMT89451-8B	1/2" Impact Standard Socket 24 mm
STMT89452-8B	1/2" Impact Standard Socket 25 mm
STMT89453-8B	1/2" Impact Standard Socket 26 mm
STMT89454-8B	1/2" Impact Standard Socket 27 mm
STMT89456-8B	1/2" Impact Standard Socket 30 mm
STMT89457-8B	1/2" Impact Standard Socket 31 mm
STMT89458-8B	1/2" Impact Standard Socket 32 mm

DEEP SOCKET



STANLEY SKU	DESCRIPTION
STMT73324-8B	1/2" 6pts Deep Socket 10 mm
STMT73326-8B	1/2" 6pts Deep Socket 12 mm
STMT73328-8B	1/2" 6pts Deep Socket 14 mm
STMT73331-8B	1/2" 6pts Deep Socket 17 mm
STMT73333-8B	1/2" 6pts Deep Socket 19 mm
STMT73334-8B	1/2" 6pts Deep Socket 21 mm
STMT73335-8B	1/2" 6pts Deep Socket 22 mm

- ASME B107.5M, ISO 1174-1, ISO 1711-1, ISO 691
- Maxi-Drive™ system helps reduce fastener rounding
- Chrome vanadium steel for manual use

PT LONG-REACH SOCKET



STANLEY SKU	DESCRIPTION
STMT72874-8B	1/4" 6pts Standard Socket 4.5mm
STMT72876-8B	1/4" 6pts Standard Socket 5.5mm
STMT72879-8B	1/4" 6pts Standard Socket 8mm
STMT72881-8B	1/4" 6pts Standard Socket 10mm
STMT72882-8B	1/4" 6pts Standard Socket 11mm

- ASME B107.5M, DIN 3124, ISO 1174-1, ISO 1711-1, ISO 691
- Maxi-Drive™ system helps reduce fastener rounding
- Chrome vanadium steel
- For manual use

STANDARD SOCKET



STANLEY SKU	DESCRIPTION
STMT72933-8B	1/2" 6pts Standard Socket 8 mm
STMT72935-8B	1/2" 6pts Standard Socket 10 mm
STMT72937-8B	1/2" 6pts Standard Socket 12 mm
STMT72938-8B	1/2" 6pts Standard Socket 13 mm
STMT72939-8B	1/2" 6pts Standard Socket 14 mm
STMT72941-8B	1/2" 6pts Standard Socket 16 mm
STMT72942-8B	1/2" 6pts Standard Socket 17 mm
STMT72944-8B	1/2" 6pts Standard Socket 19 mm
STMT72946-8B	1/2" 6pts Standard Socket 21 mm
STMT72947-8B	1/2" 6pts Standard Socket 22 mm
STMT72948-8B	1/2" 6pts Standard Socket 23 mm
STMT72949-8B	1/2" 6pts Standard Socket 24 mm
STMT72951-8B	1/2" 6pts Standard Socket 26 mm
STMT72953-8B	1/2" 6pts Standard Socket 28 mm
STMT72954-8B	1/2" 6pts Standard Socket 29 mm
STMT72957-8B	1/2" 6pts Standard Socket 34 mm
STMT72960-8B	1/2" 12pts Standard Socket 9mm
STMT72961-8B	1/2" 12pts Standard Socket 10mm
STMT72962-8B	1/2" 12pts Standard Socket 11mm
STMT72963-8B	1/2" 12pts Standard Socket 12mm
STMT72964-8B	1/2" 12pts Standard Socket 13mm
STMT72965-8B	1/2" 12pts Standard Socket 14mm
STMT72966-8B	1/2" 12pts Standard Socket 15mm
STMT72967-8B	1/2" 12pts Standard Socket 16mm
STMT72968-8B	1/2" 12pts Standard Socket 17mm
STMT72969-8B	1/2" 12pts Standard Socket 18mm
STMT72970-8B	1/2" 12pts Standard Socket 19mm
STMT72971-8B	1/2" 12pts Standard Socket 20mm
STMT72972-8B	1/2" 12pts Standard Socket 21mm

STANLEY SKU	DESCRIPTION
STMT72973-8B	1/2" 12pts Standard Socket 22mm
STMT72974-8B	1/2" 12pts Standard Socket 23mm
STMT72975-8B	1/2" 12pts Standard Socket 24mm
STMT72977-8B	1/2" 12pts Standard Socket 26mm
STMT72978-8B	1/2" 12pts Standard Socket 27mm
STMT72979-8B	1/2" 12pts Standard Socket 28mm
STMT72980-8B	1/2" 12pts Standard Socket 29mm
STMT72981-8B	1/2" 12pts Standard Socket 30mm
STMT72984-8B	1/2" 12pts Standard Socket 36mm

- Full polish finish, double-nickel with chrome plating for extra rust resistance and prolonged life
- Round head ratchet for tight access area
- Anti-slip and durable knurled metal handle design suit most industrial applications
- Flip drive ratchet head for easy directional rotation



STANLEY SKU	DESCRIPTION
STMT72899-8B	3/8" 12pts Standard Socket - 10mm
STMT72901-8B	3/8" 12pts Standard Socket - 12mm
STMT72903-8B	3/8" 12pts Standard Socket - 14mm
STMT72904-8B	3/8" 12pts Standard Socket - 15mm
STMT72906-8B	3/8" 12pts Standard Socket - 17mm
STMT72913-8B	3/8" 12pts Standard Socket - 24mm

- ASME B107.5M, DIN 3124, ISO 1174-1, ISO 1711-1, ISO 691
- Maxi-Drive™ system helps reduce fastener rounding
- Chrome vanadium steel
- For manual use

STANDARD SOCKET



STANLEY SKU	DESCRIPTION
STMT89319-8B	3/4" 6pts Socket 19 mm
STMT89322-8B	3/4" 6pts Socket 22 mm
STMT89324-8B	3/4" 6pts Socket 24 mm
STMT89325-8B	3/4" 6pts Socket 25 mm
STMT89327-8B	3/4" 6pts Socket 27 mm
STMT89328-8B	3/4" 6pts Socket 28 mm
STMT89330-8B	3/4" 6pts Socket 30 mm
STMT89333-8B	3/4" 6pts Socket 33 mm
STMT89334-8B	3/4" 6pts Socket 34 mm
STMT89341-8B	3/4" 6pts Socket 41 mm

- ASME B107.5M, DIN 3124, ISO 1174-1, ISO 1711-1, ISO 691
- Chrome vanadium steel
- For manual use

1/2" EXTENSION



STANLEY SKU	DESCRIPTION
STMT86407-8B	1/2" Extension 125mm
STMT86408-8B	1/2" Extension 250mm

- ASME B107.10M, ISO 3315 - DIN 3122 - ISO 1174-1
- Full polished finishing
- Chrome vanadium steel

SPARK PLUG SOCKET



STANLEY SKU	DESCRIPTION
STMT88996-8B	1/2" 12pts Spark Plug Socket 21mm
STMT88941-8B	3/8" 6 PTS Spark Plug Socket 16mm

- ASME B107.34M
- Chrome vanadium steel
- For manual use

UNIVERSAL JOINT



STANLEY SKU	DESCRIPTION
STMT86411-8B	1/2" Universal Joint

- ASME B107.10M, ISO 1174-2
- Chrome vanadium steel
- For manual use

TORX BIT SOCKET



STANLEY SKU	DESCRIPTION
STMT73391-8B	1/2" Torx Bit Socket T27
STMT73392-8B	1/2" Torx Bit Socket T30
STMT73393-8B	1/2" Torx Bit Socket T40
STMT73394-8B	1/2" Torx Bit Socket T45
STMT73395-8B	1/2" Torx Bit Socket T50
STMT73396-8B	1/2" Torx Bit Socket T55
STMT73397-8B	1/2" Torx Bit Socket T60

- ISO 1173, ISO 2380-1, ISO 2351-1, ISO 1174- 1, ISO 691
- S2 Steel bit
- HRC 60 +/- 2, 20% higher torque vs Cr-V
- For manual use



STANLEY SKU	DESCRIPTION
STMT73398-8B	1/2" Torx Bit Socket 100mm T30
STMT73399-8B	1/2" Torx Bit Socket 100mm T40
STMT73400-8B	1/2" Torx Bit Socket 100mm T45
STMT73401-8B	1/2" Torx Bit Socket 100mm T50
STMT73402-8B	1/2" Torx Bit Socket 100mm T55
STMT73403-8B	1/2" Torx Bit Socket 100mm T60

- ISO 1173, ISO 2380-1, ISO 2351-1, ISO 1174- 1, ISO 691
- S2 Steel bit
- HRC 60 +/- 2, 20% higher torque vs Cr-V
- For manual use

SPARK PLUG SOCKET



STANLEY SKU	DESCRIPTION
STMT73385-8B	1/2" Long Hex Bit Socket 7 mm
STMT73386-8B	1/2" Long Hex Bit Socket 8 mm
STMT73387-8B	1/2" Long Hex Bit Socket 10 mm
STMT73388-8B	1/2" Long Hex Bit Socket 12 mm

- ISO 1173, ISO 2380-1, ISO 2351-1, ISO 1174- 1, ISO 691
- S2 Steel Bit
- HRC 60 +/- 2, 20% higher torque vs Cr-V
- For manual use

3/4" SLIDING TEE



STANLEY SKU	DESCRIPTION
STMT89303-8B	3/4" Sliding Tee

- ASME B107.10M, ISO 3315 - DIN 3122 - ISO 1174-1
- Sliding head
- Chrome vanadium steel
- For manual use

PEAR HEAD RATCHET P7



STANLEY SKU	DESCRIPTION
STMT89819-8B	1/2" Pear Head Ratchet P7

- ASME B107.10M-2005, ISO 3315, DIN 3122, ISO 1174-1
- Socket safety lock
- Lever reverse: rotation direction displayed
- Chrome vanadium steel
- Quick release button

3/4" RATCHET



STANLEY SKU	DESCRIPTION
STMT91316-8B	3/4" Ratchet With Handle

- ASME B107.10M-2005, ISO 3315, DIN 3122, ISO 1174-1
- Chrome vanadium steel
- Knurled handle

ROUND HEAD RATCHET



STANLEY SKU	DESCRIPTION
87-720-1	1/2" Round Head Ratchet

- Full polish finish, double-nickel with chrome plating for extra rust resistance and prolonged life
- Round head ratchet for tight access area
- Anti-slip and durable knurled metal handle design suit most industrial applications
- Flip drive ratchet head for easy directional rotation

1/2" PEAR HEAD RATCHET



STANLEY SKU	DESCRIPTION
STMT95893-8B	1/2" Sd Pear Head Ratchet P9

- Quick release, pear head ratchet socket safety lock
- Level reverse: Rotation direction displayed
- Chrome vanadium steel
- Chemical resistant ergonomic bi-material handle
- Quick release button

DR PEAR HEAD RATCHET SET METRIC

NEW



STANLEY SKU	DESCRIPTION
STMT45501	12DR 11pcs pear head ratchet set metric
STMT45505	12DR 43pcs pear head ratchet set metric

- Improve tightening efficiency, 72 fine teeth
- Suitable for professional technicians Can be used in a variety of ways
- Durable storage box convenient to use Can be removed to put in a drawer.

T-HANDLE SOCKET



STANLEY SKU	DESCRIPTION
STMT93302-8	6pts T-Handle Socket - 8 mm
STMT93304-8	6pts T-Handle Socket - 10 mm
STMT93306-8	6pts T-Handle Socket - 12 mm
STMT93308-8	6pts T-Handle Socket - 14 mm

- ASME B107.5M, DIN 3124, ISO 691
- Cr-V steel
- Full polished finishing
- For deep access
- Thin wall socket design

14PCS 1/2" 12 PT MET SOCKET SET



STANLEY SKU	DESCRIPTION
86-501	SKT SET 1/2"DR 14PC 12PT MET

- 1/2 Inch Ratchet
- 5 Inch Extension
- 1 Sliding T Bar
- 1 Storage Case

SOCKET SET 1/2"DR 16PCS 12PT MET



STANLEY SKU	DESCRIPTION
89-092-1	SKT SET 1/2"DR 16PC 12PT MET

- STANLEY 16PC 1/2DR SOCKET SET 89-092
- Tools for tightening bolts, nuts or other hard-to-turn items
- Matt finish on the surface with raised panel
- Medium carbon steel
- 1/2 Inch 12PT

25PCS 1/2" 6PT MET SOCKET SET



STANLEY SKU	DESCRIPTION
86-589-1	SKT SET 1/2"DR 25PC 6PT MET

- 17 pcs 1/2 inch dr 6 pt sockets: 10, 11, 12, 13, 14, 15, 17, 18, 19, 20, 21, 22, 23, 24, 27, 30, 32mm
- 6 pcs 1/2 inch dr accessories: 1 Spark plug socket, 1 Sliding T-Bar: 10 inch, 1 Universal joint, 1 Flex handle: 17 inch, 2 extension bar: 5 inch & 10 inch
- 1 pc fully polished quick release ratchet
- 1 blow-mold case

24 PCS 1/2" DRIVE STANLEY® CLASSIC SOCKET SET (METRIC)



STANLEY SKU	DESCRIPTION
STMT74183-8	24pcs 1/2" Drive 6pts Socket Set In Metal Tin
STMT74184-8	24pcs 1/2" Drive 12pts Socket Set In Metal Tin

- METRIC
- 24pcs 1/2" Drive 6pts
 - Contents:
 - 1/2" Pear head ratchet NP9
 - 1/2" Extension 125, 250mm
 - 1/2" Universal joint
 - 1/2" 6pts Spark plug socket 16mm
- 1/2" 15" Swivel handle
- 1/2" 6pts Standard socket 8, 10, 11, 12, 13, 14, 15, 16, 17, 18, 19, 20, 21 22, 24, 27, 30, 32 mm

27 PCS 1/2" DRIVE SOCKET SET (METRIC)



STANLEY SKU	DESCRIPTION
86-477	27pcs 1/2" Drive Socket Set (Metric)

- METRIC
- 20 pcs 1/2" drive 12pts sockets : 10, 11, 12, 13, 14, 15, 16, 17, 18, 19, 20, 21, 22, 23, 24, 25, 26, 27, 30, 32mm
- 5 pcs 1/2" dr accessories : 2 Extension bar: 5" & 10", 1 Universal joint, 1 Spark plug socket 6pt 13/16", 1 sliding T-Bar: 9.5"
- 1 pc Flip-drive ratchet
- 1 pc Blow-mold case

26 PCS 1/2" DRIVE SOCKET SET (IMPERIAL)



STANLEY SKU	DESCRIPTION
86-478	26pcs 1/2" Drive Socket Set (Imperial)

- IMPERIAL
- 20 pcs 1/2" drive 12pts sockets : 1/4, 5/16, 3/8, 7/16, 1/2, 9/16, 19/32, 5/8, 11/16, 3/4, 25/32, 13/16, 7/8, 15/16, 31/32, 1, 1-1/16, 1-1/8, 1-3/16, 1-1/4"
- 5 pcs 1/2" dr accessories : 2 Extension bar: 5" & 10", 1 Universal joint, 1 Spark plug socket 6 pt 13/16", 1 Sliding T-Bar: 9.5"
- 1 pc Flip-drive ratchet
- 1 pc Blow-mold case

24 PCS 3/8" DRIVE SOCKET SET (METRIC)



STANLEY SKU	DESCRIPTION
89-035-1	24pcs 3/8" Drive Socket Set (Metric)

- **METRIC**
- 19 pcs 3/8" drive 6pts sockets: 6, 7, 8, 9, 10, 11, 12, 13, 14, 15, 16, 17, 18, 19, 20, 21, 22, 23, 24mm
- 4 pcs 3/8" drive accessories: 2 Extensions: 75, 150mm, 1 Universal joint, 1 Sliding T-bar
- 1 pcs 3/8" Quick release ratchet pear head
- 1 pcs Blow-mold case

35 PCS 1/4" DRIVE SOCKET SET (METRIC)



STANLEY SKU	DESCRIPTION
89-033-1	35pcs 1/4" Drive Socket Set (Metric)

- **METRIC**
- 13 pcs 1/4" drive 6pts sockets: 4, 4.5, 5, 5.5, 6, 7, 8, 9, 10, 11, 12, 13, 14mm
- 5 pcs 1/4" drive accessories: 1 Spinner handle, 2 Extensions: 75, 150mm, 1 Universal joint, 1 Hex bit holder
- 4 pcs Hex bits: 3, 4, 5, 6mm
- 6 pcs Torx bits: T10, T15, T20, T25, T30, T40
- 3 pcs PH bits: 1, 2, 3
- 3 pcs Slotted bits: 4, 5.5, 6.5mm
- 1 pcs Quick release ratchet pear head
- 1 pcs Blow-mold case

21 PCS 1/4" DRIVE SOCKET SET



STANLEY SKU	DESCRIPTION
89-507	21pcs 1/4" Drive Socket Set (Metric * Imperial)

- **METRIC**
- 8 pcs 1/4" drive 6pts sockets : 5, 6, 7, 8, 10, 11, 12, 13mm
- **IMPERIAL**
- 8 pcs 1/4" drive 6pts sockets : 3/16, 7/32, 1/4, 9/32, 5/16, 3/8, 7/16, 1/2"
- 4 pcs 1/4" dr accessories : 2 Extension bar: 2" & 6", 1 Universal joint, 1 Spinner handle
- 1 pcs Metal box

43 PCS 1/2" DRIVE SOCKET SET



STANLEY SKU	DESCRIPTION
89-509	43pcs 1/2" Drive Socket Set (Metric & Imperial)

- **METRIC**
- 20 pcs 1/2" drive 12pts sockets: 10, 11, 12, 13, 14, 15, 16, 17, 18, 19, 20, 21, 22, 23, 24, 26, 27, 28, 30, 32mm
- **IMPERIAL**
- 15 pcs 1/2" drive 12pts sockets: 3/16, 7/16, 1/2, 9/16, 5/8, 11/16, 3/4, 13/16, 7/8, 15/16, 1, 1-1/16, 1-1/8, 1-3/16, 1 1/4"
- 7 pcs 1/2" drive accessories: 2 Spark plug 6pt socket: 5/8" & 13/16", 3 Extension bar: 3", 5" & 10", 1 Universal joint, 1 Flex handle: 375mm
- 1 pcs Full polish quick release ratchet
- 1 pcs Metal box

46 PCS 3/8" DRIVE SOCKET SET



STANLEY SKU	DESCRIPTION
89-516	46pcs 3/8" Drive Socket Set (Metric & Imperial)

- **METRIC**
- 12 pcs 3/8" drive 12pts sockets : 8, 9, 10, 11, 12, 13, 14, 15, 16, 17, 18, 19mm
- **IMPERIAL**
- 7 pcs 3/8" drive 6pts sockets: 3/8, 7/16, 1/2, 9/16, 5/8, 11/16, 3/4" 18pcs1/4" drBitset:
- 6 pcs Hex bits: 3, 4, 5, 6, 7, 8mm
- 6 pcs Torx bits: T10, T15, T20, T25, T30, T40
- 3 pcs PH bits: 1, 2, 3
- 3 pcs Slotted bits: 4, 5, 6.5mm
- 8 pcs 3/8" drive accessories: 2 Spark plug 6pt socket: 5/8" & 13/16", 2 Extension bar: 3" & 6", 1 Universal joint, 1 Adapter, 1 1/4" dr spinner handle, 1 1/4" dr bit adapter
- 1 pcs "Full Polish" Quick release ratchet
- 1 pcs Metal box

79 PCS MECHANICS TOOL SET 1/2" AND 1/4"



STANLEY SKU	DESCRIPTION
STMT82780-LA	Stanley Maxi Drive 79 PCS socket set

- (2) Pear Head Ratchets: 1/2" and 1/4"
- (12) 1/2" Drive Sockets/Hubs: 8-9-10-11-12-13-14-15-16-17-18-19 mm
- (7) 1/2" Drive Sockets/Sockets: 3/8", 7/16", 1/2", 9/16", 5/8", 11/16", 3/4"
- (2) Spark Plug Sockets 1/2" Drive: 15/18" and 13/16"
- (2) 1/2" Drive Extensions: 65mm and 100mm
- (1) 1/2" Drive Articulated Handle
- (7) 1/4" Drive Sockets/Hubs: 3/16", 7/32", 1/4", 9/32", 5/16", 11/32", 3/8"
- (1) 1/4" Drive Extension: 50mm
- (1) 1/4" Bit Holder
- (1) Universal Joint 1/4" Drive
- (18) Screwdriver bits
- (18) Combination Wrenches: 8, 10, 11, 12, 13, 14, 15, 16, 17, 19mm, 1/4", 5/16", 3/8", 7/16"1/2", 9/16", 15/8", 11/16"
- (1) Reinforced plastic case



STANLEY®

SPECIALTY TOOLS

THE MEASURE OF A PRO
www.STANLEYTOOLS.com

GREASE GUN



STANLEY SKU	DESCRIPTION
95-385-2V	Grease Gun

- 12000PSU pressure
- Extra-long handle for increased leverage and easy operation
- High volume operation
- Non-slip grip handle
- Precision-fitted and hardened plunger prevents lubricant escape for cartridge
- Rugged cast pump head for strength and durability and tough impact resistant construction
- Use standard grease cartridge or can be used for bulk fill

ROUND INSPECTION MIRROR



STANLEY SKU	DESCRIPTION
STMT78241-8	Round Inspection Mirror

- Allows visibility in confined areas
- Double ball joint allows extreme mirror angles along with 360° swivel

CROSS WRENCH



STANLEY SKU	DESCRIPTION
STMT94030-8	Cross Wrench

- Chrome Vanadium Steel
- Cross type structure
- Convenient operation
- Greater torque
- Labor-saving

FLARING TOOL SET 3/16" -5/8"



STANLEY SKU	DESCRIPTION
93-040	Flaring Tool Set 3/16"-5/8"



STANLEY®

STANLEY

STORAGE

While on the job, users tend to open and shut the drawers of their storage solutions multiple times to access the necessary tools. Consistently putting uneven force on the drawers can lead to their distortion and eventual break down.

THE MEASURE OF A PRO

www.STANLEYTOOLS.com

ORGANIZER



STANLEY SKU	DESCRIPTION	LENGTH (MM)	WIDTH (MM)	HEIGHT (MM)	LATCH
STST73822-8	Small organizer	320	265	50	Plastic
STST73823-8	Medium Organizer	380	300	60	Plastic

- Designed for optimum Industrial/Domestic uses
- Better cap design-shape of plastic ensure the position of the clip.
- Transparent material handle for better visibility for lighting
- Ergonomic design-hexagonal shape provides better grip

TOOL BAG



STANLEY SKU	DESCRIPTION	WIDTH (CM)	HEIGHT (CM)	DEPTH (CM)
1-93-330	Stanley Essential 12" tool bag	30	25	13

ESSENTIAL PERSONAL POUCH



STANLEY SKU	DESCRIPTION	WIDTH (CM)	WIDTH (CM)	DEPTH (CM)	LATCH
1-96-179	Stanley Personal pouch	24	15.5	6	600 denier fabric

- The 1-96-179 Stanley pocket pouch is constructed of heavy duty, 600 denier fabric, hardwearing, strong & durable resisting cuts & scratches for long lasting durability.
- Fixing easily & securely to your belt providing extra storage capacity allowing easy access, the large zipped pocket provides safe & secure storage of important items. Fully adjustable to different belt sizes.

OPEN MOUTH TOOL BAG



STANLEY SKU	DESCRIPTION	WIDTH (CM)	HEIGHT (CM)	DEPTH (CM)
1-96-183	Stanley Essential 16" Open Mouth Tool Bag	43	27.5	23.5

FATMAX BACKPACK



STANLEY SKU	DESCRIPTION	WIDTH (CM)	HEIGHT (CM)	DEPTH (CM)
1-95-611	Stanley® Fatmax® Tool Back Pack	36	46	27

- 50 Pockets / tool holders for a wide variety of tools, including longer tools on the side such as a level
- Back support system and air mesh shoulder straps for ergonomic, convenient carriage. Spreads weight of tools instead of lifting in one hand
- Dual zipper closure enables opening from every end
- Durable 600 x 600 denier fabric
- Removable dividers system with tool holders is easily detachable, with handle for easy carriage. Spreads to form a work surface
- Rigid form can stand in open position enabling access to all tools
- Separate, strong compartment for power tool or laptop
- Waterproof plastic bottom protects against moisture and dirt
- Weight when empty 2,21kg / 28l
- No tools included

BACKPACK ON WHEELS



STANLEY SKU	DESCRIPTION	WIDTH (CM)	HEIGHT (CM)	DEPTH (CM)
STST83307-1	Stanley Essential Backpack On Wheels	36	46	27

- The backpack is made of strong and durable fabric with a density of 600 fibers
- Raised base with plastic feet - protection on wet floors
- Telescopic handle for comfortable relocation to the workplace
- Removable organizer for storing small tools
- Padded shoulder straps for greater comfort when transporting heavier tools

BACKPACK



STANLEY SKU	DESCRIPTION	WIDTH (CM)	HEIGHT (CM)	DEPTH (CM)
STST1-72335	Stanley Essential Backpack	35	16	44

- 15kg load capacity
- 600 x 600 denier fabric to ensure durability
- Detachable divider with pockets for frequently used tools
- Padded back for ergonomic, convenient carriage
- Separate Lap top /power tool compartment keeps power tools and laptop safe
- Small front compartment for personal storage

SOFT SIDE TOOL BAG



STANLEY SKU	DESCRIPTION	LENGTH (MM)	WIDTH (MM)	HEIGHT (MM)
STST512114	12" Soft Side Tool Bag	350	140	240

- Multiple internal and external pockets
- Durable body material

5 TRAY METAL TOOL BOX



COMPATIBLE
**TRANS
MODULE**
system

STANLEY SKU	DESCRIPTION	WIDTH (CM)	DEPTH (CM)	HEIGHT (CM)
1-94-738	5 Tray Metal Tool Box	47.7	25.7	22.1

- 5 compartments
- 2 articulated handles for 100% access to compartments
- Anti finger trap system
- Big storage volume

TOOL BOX - FLAT TOP



STANLEY SKU	DESCRIPTION	PRODUCT DIMENSIONS	WEIGHT	MATERIAL
STST73691-8	17.5" Toolbox - Flat Top	445 x 241 x 218 mm	1.8 Kg	Plastic

- Multiple internal and external pockets
- Durable body material

BASIC PLASTIC TOOL BOX - SLIDE IN ORGANIZER



STANLEY SKU	DESCRIPTION	PRODUCT DIMENSIONS	WEIGHT	MATERIAL
STST73696-8	16" Toolbox - Slide-in Organizer	405 x 241 x 152 mm	1.0 Kg	Plastic

- Multiple internal and external pockets
- Durable body material

ORGANIZERED MAESTRO



STANLEY SKU	DESCRIPTION	PRODUCT DIMENSIONS	WEIGHT	MATERIAL
1-71-950	19" organizered maestro	480 x 230 x 230 mm	1.6 Kg	Plastic

- Built-in padlock eye for small locks helps keep contents secure
- Material: Heavy Duty Plastic
- 19 in. organizer on lid with clear cover

TOOLBOX WITH METAL LATCHES



STANLEY SKU	DESCRIPTION	PRODUCT DIMENSIONS	WEIGHT	MATERIAL
STST24113	24" Toolbox with Metal Latches	601,98 x 292,10 x 284,48 mm	3.15 Kg	Plastic

- Built in padlock eye for small locks for secure storage of tools
- Nickel plated metal latches for durability
- Note tray

3-TIER METAL TROLLEY CART (WITHOUT SIDE PANEL)



STANLEY SKU	DESCRIPTION	PRODUCT DIMENSIONS	LAYERS	SIDE PANEL	TOTAL LOAD CAPACITY	PRODUCT MATERIAL
STST74322-8	3 Layer Trolley Cart W/O Side Panel	672 x 387 x 673 mm (Excl. Wheels & Handle)	3	No	Static Load : 50 Kg Dynamic Load : 25 Kg	Metal

3-TIER METAL TROLLEY CART (WITH SIDE PANEL)



STANLEY SKU	DESCRIPTION	PRODUCT DIMENSIONS	LAYERS	SIDE PANEL	TOTAL LOAD CAPACITY	PRODUCT MATERIAL
STST74321-8	3 Layer Trolley Cart W/O Side Panel	672 x 387 x 673 mm (Excl. Wheels & Handle)	3	Yes	Static Load : 50 Kg Dynamic Load : 45 Kg	Metal

6 DRAWERS METAL ROLLER CABINET



- Smooth Drawer Operation - Easy Access to a range of tools needed for the job
- Up to 35kg drawer capacity & 350kg Maximum Load - High load capacity for a variety of tools
- One Key Lock - For safe storage of your tools

STANLEY SKU	DESCRIPTION	PRODUCT DIMENSIONS	DRAWER SIZE	FOAM	DRAWER LOAD CAPACITY	TOTAL LOAD CAPACITY
STST74320-8	6 Drawer Rolling Cabinet	678 X 459 X 780 mm (Excl. Wheels)	Top 4: 568 X 398 X 75 mm Bottom 2: 568 X 398 X 154 mm	Top: 3 mm Eva Mat Bottom 2: 2 mm Eva Mat	35 Kg	350 Kg

STANLEY

STRIKING TOOLS

STANLEY has offered the world a great selection of striking tools for over 150 years, securing its place as one of the world's premier makers of high quality hammers. Extensive tests for quality control are conducted on each product range, giving users the best in safety and efficiency.

THE MEASURE OF A PRO
www.STANLEYTOOLS.com

CONCRETE CHISEL WITH GUARD



STANLEY SKU	DESCRIPTION
16-329	3/4" x 12" FatMax Concrete Chisel w/ Hand Guard

- Durable bull point that cuts fast and lasts long
- Ideal for cutting through and breaking up concrete

STANLEY® COLD CHISEL



STANLEY SKU	DESCRIPTION
STHT16287-8	1/2" x 6" Cold Chisel

- One-piece construction forged from chrome vanadium steel for increased strength and durability
- Hardened, quenched and tempered for long life and added safety
- Powder coat finish for increased visibility
- For cutting/ shaping wrought iron, cast iron, steel, brass, bronze, copper, aluminum, bolts, nuts and rivets

PRICK PUNCH



STANLEY SKU	DESCRIPTION
16-236	3/8" x 5-1/2" Prick Punch

- Used for marking metal
- One-piece construction forged from tempered tool steel for strength Hardened and tempered for long life
- Powder coat finish for increased visibility

CHISEL COLD WITH GUARD



STANLEY SKU	DESCRIPTION
16-332	1" x 12" FatMax Cold Chisel w/ Hand Guard

- For cutting/ shaping wrought iron, cast iron, steel, brass, bronze, copper, aluminum, bolts, nuts and rivets

CENTER PUNCH



STANLEY SKU	DESCRIPTION
16-227	1/4" x 4" Center Punch

- Used for marking metal or making indentations for starting drill holes
- One piece construction forged from tempered tool steel for strength
- Hardened and tempered for long life

BASIC WOOD CHISEL SET



STANLEY SKU	DESCRIPTION
16-089	3 Pcs Wood Chisels Set

- Package Contents: 3-Piece Wood Chisel Set (1/2 x 7 3/4, 3/4 x 7 3/4, 1 x 7 3/4)
- Durable precision ground cutting edges
- Blades are also heat tempered and lacquer coated to prevent rust

WOOD CHISEL 1/4 SET

NEW



STANLEY SKU	DESCRIPTION
STHT16120-8	Wood Chisel 1/4 Set 6-Piece

- Wood chisel sets are used for carvings during construction work.
- (6) Wood Chisel Set-1/4" set: 1 Sken Chisel, 1 Curved Gouge, 1 Curved Flat, 1 Curved U tool, 1 Straight Gauge, 1 Square Chisel

WOOD HANDLE BALL PEIN HAMMER



STANLEY SKU	DESCRIPTION
STHT54189-8	8oz Wood Handle Ball Pein Hammer
STHT54190-8	12oz Wood Handle Ball Pein Hammer
STHT54191-8	16oz Wood Handle Ball Pein Hammer
54-192-23	24oz Wood handle Ball Pein Hammer
54-193-23	32oz Wood handle Ball Pein Hammer

- Ball end used for riveting, and poll used for normal striking
- The hammer head is attached with two wedges for improved durability

DYNAGRIP® WOOD CHISEL



STANLEY SKU	DESCRIPTION
16-273	1/4" / 6mm Dynagrip Wood Chisel
16-275	3/8" / 10mm Dynagrip Wood Chisel
16-276	1/2" / 12mm Dynagrip Wood Chisel
16-278	5/8" / 16mm Dynagrip Wood Chisel
16-279	3/4" / 18mm Dynagrip Wood Chisel
16-282	1" / 25mm Dynagrip Wood Chisel
16-283	1.1/14" / 32mm Dynagrip Wood Chisel
16-284	1.1/2" / 38mm Dynagrip Wood Chisel

- Blade guard for storage safety
- Fully precision ground blade on all faces
- Ergonomic hi-impact resistant bi-material handle
- Rust-resistant, lacquered coated blade

WOOD HANDLE CLAW HAMMER



STANLEY SKU	DESCRIPTION
STHT51339-8	16oz Wood Handle Claw Hammer

- Forged high-carbon steel head provides durability
- Fully heat-treated and polished bell face
- Lightweight wooden handle

FIBERGLASS HANDLE CLAW HAMMER



STANLEY SKU	DESCRIPTION
STHT51391	16oz Yellow Fiberglass Handle Claw Hammer
STHT51392	20oz Yellow Fiberglass Handle Claw Hammer

- Fiberglass core adds strength and durability to the handle
- Yellow-colored shaft for easy product visibility
- Exclusive rim temper reduces incidences of chipping or spalling

PRICK PUNCH



STANLEY SKU	DESCRIPTION
51-081-23	16oz Steel Handle Claw Hammer
51-082-23	20oz Steel Handle Claw Hammer

- Shaft 15% longer for better balance & control in usage
- Grip 15% longer for better performance
- Individually heat-treated for long life
- Hardened and tempered tubular steel shaft for strength
- Meets ANSI standards

JACKETED FIBERGLASS ENGINEER



STANLEY SKU	DESCRIPTION
56-204	4lbs Jacketed Fiberglass Engineer Hammer

- Forged steel head-hardened and tempered
- Faces machine finished
- Selected clear lacquered hickory handle

SOFT FACE “COMPO CAST” HAMMER



STANLEY SKU	DESCRIPTION
57-530A	Hammer Compocast Softface 283g 10 Oz
57-531A	Hammer Compocast Softface 510g 18oz
57-532A	Hammer Compocast Softface 28oz
57-533A	Hammer Compocast Softface 1190g 42oz
57-534A	Hammer Compocast Softface 1500g 52oz

- Soft face helps prevent marring
- Steel reinforced handle provides strength and resists breaking on overstrike

SLEDGE HAMMER



STANLEY SKU	DESCRIPTION
56-803	3lbs Hickory Handle Engineer Hammer
56-804	4lbs Hickory Handle Engineer Hammer

- Forged steel head-hardened and tempered
- Faces machine finished
- Selected clear lacquered hickory handle

RUBBER MALLET



STANLEY SKU	DESCRIPTION
STHT57527-8	16oz Rubber Mallet Hammer
STHT57528-8	24oz Rubber Mallet Hammer

- Rubber head helps minimize marring and surface damage
- Tough rubber head molded to a wood handle

FATMAX™ WRECKING BAR



STANLEY SKU	DESCRIPTION
55-104	36" Wrecking Bar

- Forged, high-carbon steel able to withstand 975 ft.-lbs. of bending momentum
- Tri-lobe design increases strength, durability and ease of use
- High-visibility, powder-coated finish
- Slotted claw and beveled ends improve functionality and performance

DYNAGRIP® WOOD CHISEL



STANLEY SKU	DESCRIPTION
56-808	8lbs Hickory Handle Sledge Hammer
56-812	12lbs Hickory Handle Sledge Hammer
56-816	16lbs Hickory Handle Sledge Hammer

- Forged steel head-hardened and tempered
- Faces machine finished
- Selected clear lacquered hickory handle

RIPPING BAR



STANLEY SKU	DESCRIPTION
55-118	18" Forged Hexagonal Steel Ripping Bar

- Ideal for basic demolition work
- Slotted claw and beveled ends for functionality and performance 3/4" diameter high-carbon steel



STANLEY®

WRENCHES

Monitoring tool performance in real working situations, our designers have created uniquely profiled jaws and rings make the range comfortable to use, minimising downtime and keeping jobs on schedule.

THE MEASURE OF A PRO

www.STANLEYTOOLS.com

ADJUSTABLE WRENCH



STANLEY SKU	DESCRIPTION
87-430-1-S	4" Adjustable Wrench
STMT87431-8	6" Adjustable Wrench
STMT87432-8	8" Adjustable Wrench
STMT87433-8	10" Adjustable Wrench
STMT87434-8	12" Adjustable Wrench

- ASME B107.100, ASME B107.8
- Adjustable jaw design allows tool to grip many fastener sizes
- Knurl adjusting mechanism for quick and precise adjustments
- Built-in tension spring stabilizes movable jaw
- Forged chrome vanadium steel is strong and durable
- Polished chrome head and chrome-plated body for anticorrosion protection
- Laser-etched SAE and mm jaw scale for easy size adjustment
- Lightweight handle design

MAXSTEEL® ADJUSTABLE WRENCH



STANLEY SKU	DESCRIPTION
90-947-22	Maxsteel Adjustable Wrench 6" 160mm
90-948-22	Maxsteel Adjustable Wrench 8" 200mm
90-949-22	Maxsteel Adjustable Wrench 10" 250mm
90-950-22	Maxsteel Adjustable Wrench 12" 300mm

- Bi-material cushion grip for comfort
- Use for plumbing, automotive or home use
- Precision machined face with etched measurement scale in English and Metric
- Strong Chrome Vanadium steel exceed ANSI specification
- Slip-resistant bi-material cushion grip
- Rust-resistant phosphate coating
- Handy hang/storage hole in handle

QUICK ADJUSTABLE WRENCH



STANLEY SKU	DESCRIPTION
FMHT13126-0	FATMAX® Quick Adjustable Wrench 200mm/8"
FMHT13127-0	FATMAX® Quick Adjustable Wrench 250mm/10"
FMHT13128-0	FATMAX® Quick Adjustable Wrench 300mm/12"

- Innovative quick adjust mechanism ensures fast and intuitive adjustment by pressing down the wheel, with fine adjustments controlled by rolling the wheel with finger and thumb
- Black phosphate finish adds strength and durability
- 15° offset: parallel jaws placed at a 15° angle provide a firm grip, exceptional reach and precise operation
- Slim and wide jaws ensure accessibility when working in tight spaces
- Bi-material, soft-grip handle guarantees comfort in use and ultimate control

HD ADJUSTABLE WRENCH



STANLEY SKU	DESCRIPTION
87-620-S	6" Pipe Wrench (Red)
87-621-S	8" 168mm Pipe Wrench (Red)
87-622-S	10" 248mm Pipe Wrench (Red)
87-623-S	12" 297mm Pipe Wrench (Red)
87-624-S	14" 332mm Pipe Wrench (Red)
87-625-S	18" 480mm Pipe Wrench (Red)
87-626-S	24" 600mm Pipe Wrench (Red)
87-627-S	36" 900mm Pipe Wrench (Red)

- Jaw forged in Cr-Mo steel
- Cast iron body

HD ADJUSTABLE WRENCH



STANLEY SKU	DESCRIPTION
97-797-S	24" HD Adjustable Wrench

- Used for starting drill holes
- One-piece construction forged from tempered tool steel for strength Hardened and tempered for long life
- Powder coat finish for increased visibility
- Chrome Vanadium Steel.
- Plastisol handles for better comfort.
- Inch and metric scale on head.
- ANSI B107.8M

DOUBLE OPEN END WRENCH



STANLEY SKU	DESCRIPTION
STMT72839-8B	8 x 10mm Double Open End Wrench
STMT72840-8B	10 x 12mm Double Open End Wrench
STMT72843-8B	12 x 14mm Double Open End Wrench
STMT72849-8B	17 x 19mm Double Open End Wrench
STMT72848-8B	18 x 19mm Double Open End Wrench
STMT72852-8B	21 x 23mm Double Open End Wrench
STMT72853-8B	22 x 24mm Double Open End Wrench
STMT72856-8B	27 x 32mm Double Open End Wrench

- ASME B107.17M, ASME B107.100, ASME B107.9
- Maxi-Drive™ system reduce fastener rounding
- Matt finishing
- Made of Chrome Vanadium Steel
- 45° Offset

FLARE NUT WRENCH



STANLEY SKU	DESCRIPTION
87-392-1	8 x 10mm Flare Nut Wrench
87-393-1	12 x 14mm Flare Nut Wrench

- Double end flare nut 6 points
- Made of Chrome Vanadium Steel

OFFSET DOUBLE RING END WRENCH



STANLEY SKU	DESCRIPTION
STMT72857-8B	45° Offset Box End Wrench Long - 6x7mm
STMT72858-8B	45° Offset Box End Wrench Long - 8x9mm
STMT72860-8B	45° Offset Box End Wrench Long - 10x12mm
STMT72862-8B	45° Offset Box End Wrench Long - 12x14mm
STMT72866-8B	45° Offset Box End Wrench Long - 17x19mm
STMT72868-8B	45° Offset Box End Wrench Long - 19x21mm
STMT72869-8B	45° Offset Box End Wrench Long - 22x24mm
STMT72870-8B	45° Offset Box End Wrench Long - 24x27mm

- ASME B107.17M, ASME B107.100, ASME B107.9
- Maxi-Drive™ system reduce fastener rounding
- Matt finishing
- Made of Chrome Vanadium Steel
- 45° Offset

CWB COMBINATION WRENCH



STANLEY SKU	DESCRIPTION
STMT80215-8B	Combination Wrench 6 mm
STMT80216-8B	Combination Wrench 7 mm
STMT80217-8B	Combination Wrench 8 mm
STMT80218-8B	Combination Wrench 9 mm
STMT80219-8B	Combination Wrench 10 mm
STMT80220-8B	Combination Wrench 11 mm
STMT80222-8B	Combination Wrench 12 mm
STMT80223-8B	Combination Wrench 13 mm
STMT80224-8B	Combination Wrench 14 mm
STMT80225-8B	Combination Wrench 15 mm
STMT80226-8B	Combination Wrench 16 mm
STMT80229-8B	Combination Wrench 17 mm
STMT80231-8B	Combination Wrench 18 mm
STMT80233-8B	Combination Wrench 19 mm
STMT80234-8B	Combination Wrench 20 mm
STMT80235-8B	Combination Wrench 21 mm
STMT80236-8B	Combination Wrench 22 mm
STMT80239-8B	Combination Wrench 24 mm
STMT80240-8B	Combination Wrench 25 mm
STMT80242-8B	Combination Wrench 27 mm
STMT80243-8B	Combination Wrench 28 mm
STMT80244-8B	Combination Wrench 30 mm
STMT80245-8B	Combination Wrench 32 mm

- All wrenches suit the existing ANSI, ISO & DIN standards
- MAXI-DRIVE™ feature on ring-end distributes the driving force off the corner of fastener to prevent damage
- Matt finishing makes it easier to clean the solvent on the tool than mirror finishing
- Made of Carbon Steel
- Big size marking makes it easy to reach the desired wrench size during working

CWF COMBINATION WRENCH



STANLEY SKU	DESCRIPTION
STMT72805-8B	Combination Wrench 8 MM
STMT72806-8B	Combination Wrench 9 MM
STMT72807-8B	Combination Wrench 10 MM
STMT72808-8B	Combination Wrench 11 MM
STMT72809-8B	Combination Wrench 12 MM
STMT72810-8B	Combination Wrench 13 MM
STMT72811-8B	Combination Wrench 14 MM
STMT72812-8B	Combination Wrench 15 MM
STMT72813-8B	Combination Wrench 16 MM
STMT72814-8B	Combination Wrench 17 MM
STMT72815-8B	Combination Wrench 18 MM
STMT72816-8B	Combination Wrench 19 MM
STMT72817-8B	Combination Wrench 20 MM
STMT72818-8B	Combination Wrench 21 MM
STMT72819-8B	Combination Wrench 22 MM
STMT72820-8B	Combination Wrench 23 MM
STMT72821-8B	Combination Wrench 24 MM
STMT72822-8B	Combination Wrench 25 MM
STMT72823-8B	Combination Wrench 26 MM
STMT72824-8B	Combination Wrench 27 MM
STMT72825-8B	Combination Wrench 28 MM
STMT72826-8B	Combination Wrench 29 MM
STMT72827-8B	Combination Wrench 30 MM
STMT72828-8B	Combination Wrench 32 MM

- ASME B107.17M, ASME B107.100, ASME B107.6
- Maxi-Drive™ system helps reduce fastener rounding
- Anti-slip design on open-end
- Matt finishing
- Made of Chrome Vanadium Steel
- 12-point ring angled at 15°

OFFSET DOUBLE RING END WRENCH



STANLEY SKU	DESCRIPTION
87-066	6 mm Slimline Combination Wrench
87-057	7 mm Slimline Combination Wrench
87-058	8 mm Slimline Combination Wrench
87-069	9 mm Slimline Combination Wrench
87-070	10 mm Slimline Combination Wrench
87-071	11 mm Slimline Combination Wrench
87-072	12 mm Slimline Combination Wrench
87-073	13 mm Slimline Combination Wrench
87-074	14 mm Slimline Combination Wrench
87-075	15 mm Slimline Combination Wrench
87-076	16 mm Slimline Combination Wrench
87-077	17 mm Slimline Combination Wrench
87-078	18 mm Slimline Combination Wrench
87-079	19 mm Slimline Combination Wrench
87-080	20 mm Slimline Combination Wrench
87-081	21 mm Slimline Combination Wrench
87-082	22 mm Slimline Combination Wrench
87-083	23 mm Slimline Combination Wrench
87-084	24 mm Slimline Combination Wrench
87-087	27 mm Slimline Combination Wrench
87-090	30 mm Slimline Combination Wrench
87-092	32 mm Slimline Combination Wrench
87-263-22	33 mm Slimline Combination Wrench
87-264-22	34 mm Slimline Combination Wrench
87-266-22	36 mm Slimline Combination Wrench

- Made of Chrome Vanadium Steel
- Both the open ended head and the ring are angled at 15° for optimum accessibility
- Nickel chrome plating protects against corrosion
- Slim pattern
- MaxiDrive™ and anti-slip open ended jaw shape maintains grip on fastener with only slight rotational pressure
- Anti-slip feature

DEEP IMPACT SOCKET WITH TORQUE WRENCH



STANLEY SKU	DESCRIPTION	RANGE	INCREMENTS
STMT73588-8	3/8" Torque Wrench 10-50nm	10 - 50Nm / 9.2 - 38.7 ft-Lbs	0.5 Nm
STMT73590-8	1/2" Torque Wrench 40-200nm	40 - 200Nm / 33.2 - 151.2 ft-Lbs	1 Nm
STMT73591-8	1/2" Torque Wrench 60-340nm	60 - 340Nm / 51.6 - 258.1 ft-Lbs	2 Nm
STMT73592-8	3/4" Torque Wrench 150- 750 Nm	150 - 750Nm 110 - 550 ft-Lbs	2.5 Nm

COMBINATION WRENCH SET



STANLEY SKU	DESCRIPTION
STMT78097-8	12pcs Combination Wrench Set, 6-24mm
STMT78098-8	9pcs Combination Wrench Set, 8-17mm
STMT78099-8	8pcs Combination Wrench Set, 8-19mm

- All wrenches suit the existing ANSI, ISO & DIN standards
- MAXI-DRIVE™ feature on ring-end distributes the driving force off the corner of fastener to prevent damage
- Matte finishing makes it easier to clean the solvent on the tool than mirror finishing
- Made of Carbon Steel
- Big size marking makes it easy to reach the desired wrench size during working



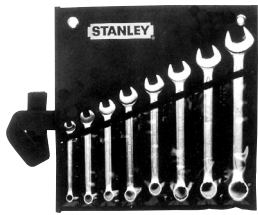
COMBINATION SPANNER SET



STANLEY SKU	DESCRIPTION
STMT78092-8	14pcs Comb Spanner Set (Metric) 8, 9, 10, 11, 12, 13, 14, 15, 16, 17, 19, 21, 22 & 24mm
STMT78096-8	13pcs Comb Spanner Set (Inches) 1/4", 5/16", 3/8", 7/16", 1/2", 9/16", 5/8", 11/16", 3/4", 13/16", 7/8", 15/16", 1"

- All wrenches suit the existing ANSI, ISO & DIN standards
- MAXI-DRIVE™ feature on ring-end distributes the driving force off the corner of fastener to prevent damage
- Matte finishing makes it easier to clean the solvent on the tool than mirror finishing
- Made of Carbon Steel
- Big size marking makes it easy to reach the desired wrench size during working

8 PCS CWE SLIMLINE COMBINATION WRENCH SET



STANLEY SKU	DESCRIPTION
87-011-1	"Slimline" wrench: 8, 10, 11, 13, 14, 17, 19, 22mm Heavy-duty nylon pouch Inner box

- Made of Chrome Vanadium Steel
- Both the open ended head and the ring are angled at 15° for optimum accessibility
- MaxiDrive™ and anti-slip open ended jaw shape maintains grip on fastener with only slight rotational pressure
- Anti-slip feature

COMBINATION WRENCH BASIC SET



STANLEY SKU	DESCRIPTION
STMT80942-8	11 pcs Combination Wrench Basic Set (8,9,10,11,12,13,14,17, 19,22,24mm)
STMT80944-8	14 pcs Combination Wrench Basic Set (8,9,10,12,13, 14,17,19,21,22,24,27,30,32mm)

- All wrenches suit the existing ANSI, ISO & DIN standards
- MAXI-DRIVE™ feature on ring-end distributes the driving force off the corner of fastener to prevent damage
- Matte finishing
- Made of Carbon Steel
- Big size marking makes it easy to reach the desired wrench size during working

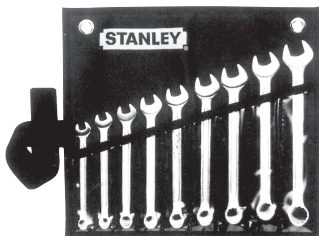
8 PCS SLIMLINE DOUBLE OPEN END WRENCH SET



STANLEY SKU	DESCRIPTION
87-718-1	"Slimline" wrench: (Metric) 6 x 7, 8 x 9, 10 x 11, 12 x 13, 14 x 15, 16 x 17, 18 x 19, 20 x 22mm Heavy-duty nylon pouch Inner box

- Made of Chrome Vanadium Steel
- Ends are slanted 15° for quick operation
- Two sizes per wrench
- Comprehensive set of open end wrench for the most common sizes
- Anti-slip feature

9 PCS CWE SLIMLINE COMBINATION WRENCH SET



STANLEY SKU	DESCRIPTION
87-034-1	"Slimline" wrench: 8, 9, 10, 11, 12, 13, 14, 15, 17mm Heavy-duty nylon pouch Inner box

- Made of Chrome Vanadium Steel
- Both the open ended head and the ring are angled at 15° for optimum accessibility
- Slim pattern
- MaxiDrive™ and anti-slip open ended jaw shape maintains grip on fastener with only slight rotational pressure
- Anti-slip feature

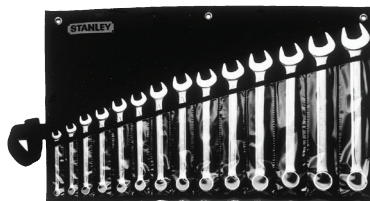
75° OFFSET DOUBLE RING END WRENCH



STANLEY SKU	DESCRIPTION
87-617-3	"Slimline" wrench: (Metric) 6 x 7, 8 x 9, 10 x 11, 12 x 13, 14 x 15, 16 x 17, 18 x 19, 20 x 22, 21 x 23, 24 x 27mm Inner box

- Double ring wrench
- Made of Chrome Vanadium Steel
- MaxiDrive™ Plus profile - Attacks on the sides, not the corners of the nut or bolt
- Twelve-edged head for optimal support of hexagonal and square nuts
- Polished and chrome-plated finish for excellent protection
- Heads to 70° for greater access in tight spaces
- Powerful and safe working

14 PCS CWE SLIMLINE COMBINATION WRENCH SET



STANLEY SKU	DESCRIPTION
87-036-1	"Slimline" wrench: 8, 9, 10, 11, 12, 13, 14, 15, 16, 17, 19, 21, 22, 24mm Heavy-duty nylon pouch Inner box
87-038-1	"Slimline" wrench: 10, 11, 12, 13, 14, 17, 19, 21, 22, 23, 24, 26, 30, 32mm Heavy-duty nylon pouch Inner box
87-709-1	"Slimline" wrench: 3/8", 7/16", 1/2", 9/16", 5/8", 11/16", 3/4", 13/16", 7/8", 15/16", 1", 1 1/16", 1 1/8", 1 1/4" Heavy-duty nylon pouch Inner box

- Made of Chrome Vanadium Steel
- Both the open ended head and the ring are angled at 15° for optimum accessibility
- Nickel chrome plating protects against corrosion
- Slim pattern
- MaxiDrive™ and anti-slip open ended jaw shape maintains grip on fastener with only slight rotational pressure
- Anti-slip feature

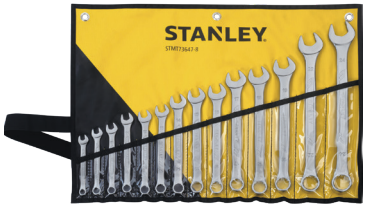
COMBINATION WRENCH SET



STANLEY SKU	DESCRIPTION
STMT73649-8	8 pcs CWF Combination Wrench Set

- Combination wrench 8 mm
- Combination wrench 10 mm
- Combination wrench 11 mm
- Combination wrench 12 mm
- Combination wrench 13 mm
- Combination wrench 14 mm
- Combination wrench 17 mm
- Combination wrench 19 mm

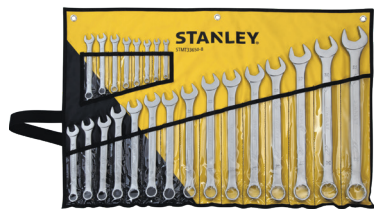
14PCS COMBINATION WRENCH SET



STANLEY SKU	DESCRIPTION
STMT73647-8	14 pcs CWF Combination Wrench Set

- | | |
|--|--|
| <ul style="list-style-type: none">• Combination wrench 8 mm• Combination wrench 9 mm• Combination wrench 10 mm• Combination wrench 11 mm• Combination wrench 12 mm• Combination wrench 13 mm• Combination wrench 14 mm | <ul style="list-style-type: none">• Combination wrench 15 mm• Combination wrench 16 mm• Combination wrench 17 mm• Combination wrench 18 mm• Combination wrench 19 mm• Combination wrench 22 mm• Combination wrench 24 mm |
|--|--|

23PCS COMBINATION WRENCH SET



STANLEY SKU	DESCRIPTION
STMT33650-8	23 pcs CWF Combination Wrench Set

- | | |
|---|--|
| <ul style="list-style-type: none">• Combination wrench 6 mm• Combination wrench 7 mm• Combination wrench 8 mm• Combination wrench 9 mm• Combination wrench 10 mm• Combination wrench 11 mm• Combination wrench 12 mm• Combination wrench 13 mm• Combination wrench 14 mm• Combination wrench 15 mm• Combination wrench 16 mm• Combination wrench 17 mm | <ul style="list-style-type: none">• Combination wrench 18 mm• Combination wrench 19 mm• Combination wrench 20 mm• Combination wrench 21 mm• Combination wrench 22 mm• Combination wrench 23 mm• Combination wrench 24 mm• Combination wrench 25 mm• Combination wrench 27 mm• Combination wrench 30 mm• Combination wrench 32 mm |
|---|--|

TRANSMODULE TOOL SET CLEAR CASE



STANLEY SKU	DESCRIPTION
STST74301-8	16" Tool Set Case

- Single sliding latch drives efficient work flow
- Extra tough transparent cover design provides clear visibility & protection
- Removable divider for additional organization
- Big handle made it easy-to-carry

4 PCS PLIERS MODULE



STANLEY SKU	DESCRIPTION
STMT74179-8	4pcs Pliers Module

- 8" Bent nose pliers
- 6" Diagonal cutting pliers
- 7" Linesman pliers
- 8" Slip joint pliers

4 PCS CIRCLIP PLIERS MODULE



COMPATIBLE
**TRANS
MODULE**
system



STANLEY SKU	DESCRIPTION
STMT74180-8	4pcs Circlips Pliers Module

- 7" Basic circlip plier straight exterior type
- 7" Basic circlip plier bent exterior type
- 7" Basic circlip plier straight interior type
- 7" Basic circlip plier bent interior type

1/4" METRIC SOCKET MODULE - 60 PCS



COMPATIBLE
**TRANS
MODULE**
system



STANLEY SKU	DESCRIPTION
STMT74175-8	60pcs 1/4" Metric Socket Module

- 1/4" Drive 6pts Standard socket 4, 4.5, 5, 5.5, 6, 7, 8, 9, 10, 11, 12, 13, 14mm
- 1/4" Drive 6pts Deep socket 4, 5, 5.5, 6, 7, 8, 9, 10, 11, 12, 13, 14mm
- 1/4" Hexagon bit socket 2, 2.5, 3, 4, 5, 6mm
- 1/4" Bit socket slot 4, 5.5, 7mm
- 1/4" Bit socket PZ1, PZ2, PZ3
- 1/4" Bit socket PH1, PH2, PH3
- 1/4" Torx bit socket T6, T7, T8, T9, T10, T15, T20, T25
- 1/4" Torx socket E4, E5, E6, E7, E8, E10
- 1/4" Pear head ratchet NP9
- 1/4" Spinner
- 1/4" Extension 50, 100mm
- 1/4" Universal joint
- 1/4" Sliding tee

8 PCS CUSHION GRIP SCREWDRIVER MODULE



COMPATIBLE
**TRANS
MODULE**
system



STANLEY SKU	DESCRIPTION
STMT74181-8	8pcs Cushion Grip Screwdriver Module

- Cushion grip standard 3mm X 100mm
- Cushion grip standard parallel 5mm X 150mm
- Cushion grip standard 6.5mm X 150mm
- Cushion grip standard 8mm X 200mm
- Cushion grip phillips PH0 X 60mm
- Cushion grip phillips PH1 X 100mm
- Cushion grip phillips PH2 X 125mm
- Cushion grip phillips PH3 X 150mm

1/2" METRIC BIT SOCKET MODULE - 24 PCS



COMPATIBLE
**TRANS
MODULE**
system



STANLEY SKU	DESCRIPTION
STMT74176-8	24pcs 1/2" Drive Metric Bit Socket Module

- 1/2" Drive Torx bit socket T20, T25, T27, T30, T40, T45, T50, T55, T60
- 1/2" Drive Long torx bit socket T30, T40, T45, T50, T55, T60
- 1/2" Drive Torx socket E10, E11, E12, E14, E16, E18, E20, E22, E24

3/8" METRIC SOCKET MODULE - 36 PCS



COMPATIBLE
**TRANS
MODULE**
system



STANLEY SKU	DESCRIPTION
STMT74174-8	36pcs 3/8" Drive Metric Socket Module
<ul style="list-style-type: none">• 3/8" Drive 12pts Standard socket 8, 9, 10, 11, 12, 13, 14, 15, 16, 17, 18, 19, 21, 22mm• 3/8" Drive 6pts Deep socket 8, 10, 11, 12, 13, 14, 15, 16, 17, 18, 19, 21, 22mm• 3/8" Hexagon bit socket 4, 5,	<ul style="list-style-type: none">• 6mm• 3/8" Torx bit socket T25, T30, T40• 3/8" Extension 125mm• 3/8" Universal joint• 3/8" Pear head ratchet NP9

10 PCS OFFSET DOUBLE ANTI SLIP RING MODULE



COMPATIBLE
**TRANS
MODULE**
system



STANLEY SKU	DESCRIPTION
STMT74177-8	10pcs Offset Double Ring Module
<ul style="list-style-type: none">• Offset double ring wrench 6x7mm• Offset double ring wrench 8x9mm• Offset double ring wrench 10x12mm• Offset double ring wrench 11x13mm• Offset double ring wrench 12x14mm	<ul style="list-style-type: none">• Offset double ring wrench 14x15mm• Offset double ring wrench 16x17mm• Offset double ring wrench 18x19mm• Offset double ring wrench 21x23mm• Offset double ring wrench 22x24mm

16PCS SLIMLINE COMBINATION WRENCH MODULE



COMPATIBLE
**TRANS
MODULE**
system



STANLEY SKU	DESCRIPTION
STMT74897-8C	16pcs Slimline Combination Wrench Module Set
<ul style="list-style-type: none">• Slimline Combination Wrench• Made of Chrome Vanadium Steel• Matt Finishing• 6 to 24mm size• 16" Tool case	

23 PCS 1/2" 12PTS METRIC SOCKET MODULE SET



COMPATIBLE
**TRANS
MODULE**
system



STANLEY SKU	DESCRIPTION
STMT74726-8C	23pcs 1/2" Drive 12pts Metric Socket Module Set
<ul style="list-style-type: none">• 1/2" Pear head ratchet NP9• 1/2" L-handle 90 degree• 1/2" Extension 125, 250mm• 1/2" Universal joint• 1/2" 12pts Standard socket 8, 9, 10, 11, 12, 13, 14, 15, 16, 17, 18, 19, 21, 22, 24, 27, 30, 32mm• 16" Tool case	

STANLEY



HAND TOOL SET

THE MEASURE OF A PRO
www.STANLEYTOOLS.com

6 PCS HAND TOOL SET



STANLEY SKU	DESCRIPTION
70-880	6pcs Hand Tool Set
<ul style="list-style-type: none">• Snap-Off Blade (18mm)• Fiberglass Handle Hammer (16 oz)• Screwdriver: 1/4 x 4" (6.5mm x 100mm)• Screwdriver: #2x4" (2x100mm)• 6" (152mm) long nose pliers• Universal pliers 6" (152mm)	

18 PCS HOME IMPROVEMENT TOOL SET



STANLEY SKU	DESCRIPTION
90-597-23	18pcs Home Improvement Hand Tool Set (Flip Bag)
<ul style="list-style-type: none">• 1set Precision Screwdriver Set• 1pc Linesman Pliers: 8"• 1pc Long Nose Pliers: 6"• 1pc Adjustable Wrench: 8"• 1pc Test Pen 100-500V AC: 150mm• 1pc Snap-Off Knife: 9mm• 1pc Cushion Grip Screwdriver: 3 x 100mm• 1pc Cushion Grip Screwdriver: #0 x 100mm• 1pc Cushion Grip Screwdriver: 6.5 x 150mm• 1pc Cushion Grip Screwdriver: #2 x 150mm• 1pc Solder Iron: 30W/220W• 1pc STANLEY Tape Rules: 8m• 1set Metric Hex Key Set: 10pcs• 1pc Wood Handle Nail Hammer: 13oz• 1pc Mini Hacksaw: 8-3/4"• 1pc Torch Light• 1pc Pinch• 1pc Scissor• 1pc Nylon Bag	

7 PCS HOME IMPROVEMENT TOOL SET



STANLEY SKU	DESCRIPTION
90-596N-23	7pcs Home Improvement Hand Tool Set (Flip Bag)
<ul style="list-style-type: none">• 1pc Test Pen: 100-500V• 1pc Snap-Off Blade: STANLEY 18mm• 1pc Tape Rules: 3m• 1pc Cushion Grip Screwdriver: M6 x 100mm• 1pc Cushion Grip Screwdriver: 6 x 100mm• 1pc Adjustable Wrench: 8"• 1pc Linesman Pliers: 7"	

19 PCS HOME-USE TOOLS SET



STANLEY SKU	DESCRIPTION
92-009-23	19pcs Home Use Tool Set (Flip Bag)
<ul style="list-style-type: none">• 1pc STANLEY Tape Rules: 3m• 1pc 6-way Screwdriver• 1pc Linesman Pliers: 8"• 1pc Snap-Off Knife: 18mm• 1pc Adjustable Wrench: 8"• 1pc Mini Hacksaw: 8-3/4"• 1set Precision Screwdriver Set• 1pc Wood Handle Nail Hammers: 13oz• 1pc Digital Spark Test Pen• 1pc Water Proof Tool Bag	

22 PCS ELECTRICIAN TOOLS SET



STANLEY SKU	DESCRIPTION
92-005-1-23	22pcs Electrician Hand Tool Set (Non-VDE)
<ul style="list-style-type: none">1pc STANLEY Tape Rules: 3m1pc Multimeter1pc Slip Joint Pliers: 8"1pc Long Nose Pliers: 6"1set Metric Hex Key Set: 10pcs1pc Adjustable Wrench: 6"1pc Cushion Grip Screwdriver: #1 x 100mm1pc Cushion Grip Screwdriver: 5 x 100mm1pc Digital Spark Test Pen1pc Torch Light1pc PVC Adhesive Tape1pc Electrician Knife1pc Waterproof Tool Bag	

47 PCS HOME-DIY TOOLS SET



STANLEY SKU	DESCRIPTION
92-006-23	25pcs General Purpose Hand Tool Set (Hand Bag)
<ul style="list-style-type: none">1pc Wood Handle Nail Hammer: 7oz1pc STANLEY Tape Rules: 3m1pc Knife1set Metric Hex Key Set: 10pcs1pc Linesman Pliers: 8"1pc Long nose Pliers: 6"1pc Adjustable Wrench: 8"1set 6-way Screwdriver Set1pc Digital Spark Test Pen1pc Torch Light1pc Waterproof Tool Bag	

47 PCS HOME-DIY TOOLS SET



STANLEY SKU	DESCRIPTION
STHT74981	47pcs Home Tools DIY Set (Kit Box)
<ul style="list-style-type: none">20 Screwdriver Bits16pcs Hex Key1.5, 2, 2.5, 3, 4, 5, 5.5, 6mm1/16", 5/64", 3/32", 1/8", 5/32", 3/16", 7/32", 1/4"1pc Adjustable Wrench: 6"1pc Long Nose Pliers: 6"1pc Hammer: 12oz1pc Utility Knife1pc Torpedo Level: 9"1pc Measuring Tape: 3m1set Precision Screwdriver Set1set Magnetic Bit Driver1pc Tool Box	

110 PCS MULTI TOOLS SET



STANLEY SKU	DESCRIPTION
STMT81243-840	110pcs Multi Tools Set (Kit Box)

- 1 Pc Diagonal Cutting Plier 6 inch
- 1 Pc Long Nose Plier 8 inch
- 1 Pc Groove Joint Pliers 10 inch
- 2 Pc Slotted Screwdrivers: 5.5x75 mm, 6.5x100 mm
- 2 Pc Philips Screwdriver: Ph1x75 mm, Ph2x100 mm
- 1 Pc 1/4 inch Bit Adapter Ratcheting Screwdriver
- 40 Bits :
- Slotted Bits: 3.5x2, 2x4, 5.5, 6.5, 8 mm
- Square Bits: S1, S2 And S3
- Philips Bits: Ph0x2, Ph1x2, Ph2x2, Ph3x2
- Adaptors (2 Parts)
- Torx Bits: T10, T15, T20, T25, T27, T30, T40
- Pozidriv Bits: Pz1, Pz2, Pz3
- Tri-Wing Bits: 1, 2, 3, 4
- Hexagonal Bits: 2, 3, 4, 5, 7 mm
- 1 Pc 1/4 inch Flexible Extension 100 mm- 1/4 (M)x1/4 (F) inch
- 1 Pc 1/4 inch Extension 50 mm
- 1 Pc 1/4 inch Extension 100 mm
- 1 Pc 1/2 inch Extension 125 mm
- 1 Pc 1/2 inch Extension 250 mm
- 1 Pc 1/2 inch 3 Way Adaptor
- 1 Pc 1/4 inch Universal Joint
- 1 Pc 1/2 inch Universal Joint
- 1 Pc 1/2 inch Spark Plug Sockets 16 mm
- 1 Pc 1/2 inch Spark Plug Sockets 21 mm
- 1 Pc 1/4 inch Ratchet With Quick Release Button 72T
- 1 Pc 1/2 inch Ratchet With Quick Release Button 72T
- 11 Pc Combination Wrenches: 8-15, 17, 18, 19 mm
- 8 Pc Hex Key Set: 1.5, 2, 2.5, 3, 4, 5, 5.5, 6 mm
- 15 Pc 1/2 inch 6 PT Socket 10-15, 17, 18, 19, 20-24, 27 mm
- 11 Pc 1/4 inch 6 PT Socket: 4, 5, 6, 7, 8, 9, 10, 11, 12, 13, 14 mm, 1 Hex Key Rack, 4 Bit Racks

118 PCS MIXED HAND TOOL SET



STANLEY SKU	DESCRIPTION
STHT75945-8	118pcs Mixed Hand Tool Set

- 1 x 8oz fibreglass hammer
- 1 x long nose pliers
- 1 x diagonal pliers
- 1 x 7-in-1 screwdriver
- 10 x bits
- 1 x 12" tape measure
- 1 x torpedo level
- 1 x utility knife
- 100 x fastener set
- Soft side tool bag

125 PCS MULTI-TOOL SET



STANLEY SKU	DESCRIPTION
STMT74393-8-23	125pcs Multi-Tool Set

- Pear head ratchet with quick release button
- Set content includes 1/4 in. 3/8 in. and 1/2 in. drives sockets and sizes in each drive are not duplicated
- Specialty tools tester, oil filter wrench and tang thru screwdriver included suitable for auto repair and industry application

CLASSIC MECHANICAL TORQUE WRENCH NON-LENGTH DEPENDENT



SKU	Product Name	Square Drive	Capacity				Lenght
			Nm	Kg.m	Lbf.in	Lbf.ft	
AVT100A	3/8" 2.5-11NM TORQUE WRENCH	3/8"	2.5 - 11	0.3 - 1.2	20 - 100	2 - 8	318 mm
AVT300A	3/8" 5-33NM TORQUE WRENCH	3/8"	5 - 33	0.5 - 3.4	40 - 300	4 - 24	422 mm
EVT600A	1/2" 12 - 68NM TORQUE WRENCH	1/2"	12 - 68	1.2 - 7	100 - 600	10 - 50	476 mm
EVT1200A	1/2" 25 - 135NM TORQUE WRENCH	1/2"	25 - 135	3 - 14	20 - 100	20 - 100	547 mm
EVT2000A	1/2" 50 - 225NM TORQUE WRENCH	1/2"	50 - 225	5 - 23	400 - 2000	40 - 160	597 mm
EVT3000A	1/2" 70 - 330NM TORQUE WRENCH	1/2"	70 - 330	7 - 35	600 - 3000	50 - 250	825 mm
HVT5000	3/4" 140 - 560NM TORQUE WRENCH	3/4"	140 - 560	14 - 57	1200 - 5000	100 - 410	1130 mm
HVT7200	3/4" 200 - 810NM TORQUE WRENCH	3/4"	200 - 810	22 - 82	1800 - 7200	150 - 600	1181 mm
GVT8400	1" 480 - 940NM TORQUE WRENCH	1"	480 - 940	48 - 95	4248 - 8319	354 - 693	1397 mm

The torque wrench is an essential and sometimes mandatory tool that is now fundamental in most garages and workshops. The Britool torque wrench range has been carefully designed to provide a range of solutions to meet the needs of the torque-tightening user

Unique 3-phase Mechanism

A progressive torque build-up to the selected setting is easily detected by three clear signals:

1. SIGHT—see the mechanism progressively move towards the point of break as the load is applied
2. TOUCH—feel the point of torque
3. SOUND—unmistakeable CLICK. This makes it ideal for use in noisy environments

LAYANAN PURNA JUAL GARANSI STANLEY HAND TOOLS KINI SEUMUR HIDUP

STANLEY
LIFETIME
LIMITED
WARRANTY

STANLEY Hand Tools memberikan garansi seumur hidup terhadap cacat bawaan pabrik pada material dan proses pabrikasi. Dalam hal ini, produk yang rusak akan diganti atau diperbaiki.

Garansi terbatas ini tidak berlaku pada produk berikut:

- Produk yang tidak digunakan sesuai petunjuk penggunaan atau diperbaiki oleh pihak selain Stanley Hand Tools.
- Kerusakan berbentuk keausan pada produk
- Torque wrench, Torque Multiplier, Torque Tester; alat-alat tersebut bergaransi 1 tahun.
- Produk Laser, memiliki garansi 2 tahun, tidak termasuk kalibrasi.
- Produk yang memiliki kecenderungan habis selama pemakaian, seperti drill bit, knife blade, dll.
- Kerusakan akibat produk terjatuh, modifikasi dan spare part yang tidak original.

KECEPATAN PERBAIKAN

Mengembalikan perkakas Anda kembali beroperasi normal secepat mungkin merupakan tujuan utama kami. Terkait dengan ketersediaan suku cadang, perbaikan yang melibatkan bagian mudah aus tidak akan memakan waktu lebih dari 5 HARI.

KUALITAS PERBAIKAN TERBAIK

Perbaikan terhadap perkakas Anda yang dilakukan oleh teknisi **STANLEY BLACK & DECKER** yang tersertifikasi dan telah berpengalaman akan mendapatkan garansi perbaikan selama 30 HARI.

HUBUNGI LAYANAN PURNA JUAL

Jika Anda memiliki pertanyaan mengenai produk dan layanan purna jual **STANLEY BLACK & DECKER**, Anda dapat menghubungi:



<https://id.stanleytools.global/en>



support@stanleytools.co.id



+1 210-693-1486
(Bahasa Indonesia)



+62 855 7467 9105
(Hanya aktif pada jam kerja)

AUTHORIZED SERVICE CENTER

Ambon

CV. Bob Motor Ambon
Jl. Cendrawasih, Gang Merpati No.3,
Kelurahan Rijali, Sirimau, Kota Ambon,
Maluku 97123
Tel.: (+62) 911 – 349164
Hp.: 0821 9791 5549

Balikpapan

PT. Bumi Bangun Perkasa
Jl. Indrakila No. 2 RT. 2 Gn. Samarinda
Baru Kec. Balikpapan Utara, Kota
Balikpapan Kalimantan Timur 76125
Tel.: (+62) 542 – 4651551
Email: teknis@bumibangun.com

Bandung

PT. Haskar Inter Global / Toko Hong Kie
Jl. Station Timur No. 36 kelurahan Braga,
kecamatan sumur Bandung, kota Bandung
40111
Tel.: (+62) 22 – 4263402 / 4263489
Fax.: (+62) 22 – 4237161
Email: haskarig@yahoo.co.id

PT. Perkakasku Multi Cemerlang
Jl. Jend. Ahmad Yani 350
Bandung, Jawa barat 40271
Tel.: (+62) 22 – 7271396 / 7271332
Hp.: 0811 239 6685
Fax.: (+62) 22 – 7214547

Batam

PT. Continental Industry Supply
Komp. Lytech Industrial Park
Block F No. 9, Batam Centre, Batam
Tel.: (+62) 778 – 7494850 / 7490777 /
7490888
Fax.: (+62) 778 – 7494849
Email: wira@continental-supp.com
yance@continental-supp.com ;
Web.: www.continental-supp.com

Bau Bau

PT. Sinar Mitra Bangunan /
Izzie Home
Jl. Sultan Hassanudin No 5 Bau-Bau
Pulau Buton, Sulawesi Tenggara
Tel.: (+62) 402 – 2821413 / 2821851
Fax: (+62) 402 – 2822035
Email: smb@izziehome.com

Bekasi

PT. Vins Teknik Internus
Jl. Boulevard Raya, Ruko Sentral Niaga 5
No.18 & 22 Grand Galaxy, Bekasi Selatan,
Indonesia
Tel.: 021 - 82725538
Hp.: 087786413043
Web.: www.vinsteknik.com
Email: vinsteknikinternusa@gmail.com

Cikarang

Toko Multi Mulya Teknik
Jln Raya Cibarusah no 15/16 Desa
sukaesmi, lippo Cikarang,
Kabupaten Bekasi
Tel.: (+62) 8971822 / 8971823

Denpasar

Toko Mulia Teknik
Jl. Gatot Subroto No. 388,
Kec. Denpasar Utara - Bali, 80111
Hp.: 0851 0281 6699
Email: muliateknikgatsu345@gmail.com

Depok

CV. Hanna Teknik
Jl. Tole Iskandar No. 3A Kel. Sukamaju,
Kec. Cilodong Kota Depok 16415
Tel.: (+62) 21 – 8372 9245
WA / Hp.: 0857 1011 3535
Email: sales@hannateknik.com

Duri

PT. Profita Abadi
Jl. Lintas Duri - Dumai KM. 4 Kulim Balai
Makam - Bathin Solapan, Bengkalis
Hp.: 0813 7108 8893

Jakarta

PT. Yuan Wira Perdana
LTC Glodok Lt. GF1 Blok A26 No. 8-9
Jl. Hayam Wuruk Kel. Mangga Besar -
Jakarta Barat
Tel.: (+62) 21 – 22686872
Hp.: 0812 9695 0631
Email: service.powertools@yuanwira.com

PT. Mitra Teknik Elektrindo
Komplek Ruko Glodok Plaza Blok A No. 15
Taman sari Glodok - Jakarta Barat
Tel.: (+62) 21 – 6250606 / 6250609
Hp.: 0815 1357 1915 / 0819 2800 1111
Email: mitrateknikelektrindo@gmail.com
ssdmte@gmail.com
adefirman27@yahoo.com

Kendari

Toko Pelita Indah
Jl. MT Haryono no.95D-E Kendari Sulawesi
tenggara
Tel.: (+62) 401 – 3196605
Email: pelitaindah.kendari@gmail.com

Makassar

CV. Zidan Al Fatih
Jl. Aroepala Perum Taman Yasmin E2/6,
Kota Makassar, Sulawesi Selatan
Hp.: 0811 412 3404
Email: zidanalfatih@yahoo.com

CV. Zidan Al Fatih
Jl. Racing Centre / Prof. Abdurahman
Basalamah. No.2, Kec. Panakukang, kel.
Karampuang, kota Makassar. K.Pos 90231
Hp.: 0811 412 3404
Email: zidanalfatih@yahoo.com

Medan

DW Hardware
Jl. Pandu, Ps. Baru, Kec. Medan Kota, Kota
Medan, Sumatera Utara 20154
Tel.: (+62) 61 – 4571768

PT. Faedah Teknik
Jl. Tjong Yong Hian (d/h Jl. Bogor No.40),
Medan
Tel.: 061-4568886
Hp.: 0822 2108 668
Fax.: 061 - 4569174
Email: faedah.medan@gmail.com

PT. Karya Inti Mentari
Jl. Mesjid No. 48 Helvetia Medan Sunggal
Sumatera Utara
Hp.: 0811 6222 383

Pangkep

Harapan Global Nusantara
Jl. Kemakmuran KM51 Kab. Pangkajene &
Kepulauan, Sulawesi Selatan.
Hp.: 0813 8929 1212

Samarinda

PT. Subur Makmur Bangunan
Jl. Gatot Subroto No.62-68, Bandara,
Kec. Sungai Pinang, Kota Samarinda,
Kalimantan Timur 75123
Tel.: (+62) 541 – 201384

PT. Karya Inti Total Anugerah
MangkuPalas, Jl. Pattimura No. 67
Samarinda Seberang, Samarinda City, East
Kalimantan 75133
Tel.: (+62) 541 – 7266443
Hp : 0822 9779 9998
Email : karya.inti.total.anugerah@gmail.
com

Semarang

PT. Inter Prima Machinery
Ruko Taman Niaga Blok B No 2, JL. RM
Hadisoebeno Sosrowardoyo, BSB City,
Mijen - Kota Semarang 50212
Tel.: (+62) 24 – 3532 0003

Surabaya

PT. Ratna Asia
Komplek Permata, Jl. Raden Saleh No.4,
Bubutan, Surabaya, Jawa Timur
Hp.: 0822 4593 9609

PT. RTT Power Indonesia
Jl. Rajawali No. 70, Krembangan Sel, Kec.
Krembangan, Surabaya
Hp.: 0895 6159 0144
Email: toolsteknik92@gmail.com

Tangerang

PT. Bahana Andalan Pasti
Ruko Ice Business Part BSD - Blok D-01
Jl. BSD Grand Boulevard, Pagedangan,
Kec. Padegangan - Kab Tangerang Banten
15339
Tel.: (+62) 21 – 2222 9278
Hp.: 0895 3663 59800
Email: tools@ptbap.id

Teknikmart
Jl. Raya Merdeka No.20 RT003 RW001
Kel. Sukajadi Kec. Karawaci Kota
Tangerang Banten 15113
Tel.: (+62) 21 – 5958 3900

Yogyakarta

Qhome Service Center
Jl. Raya Janti Ring Road Timur No. 96
Kanoman, RT. 006 / RW. 020
Banguntapan - Yogyakarta
Hp.: 0822 9929 9297

STANLEY®

PERFORMANCE IN ACTION™



+62 855 7467 9105
(Hanya aktif pada jam kerja)



support@stanleytools.co.id



+1 210 693 1486
(Bahasa Indonesia)



<https://id.stanleytools.global/en>



Stanley Tools ID



@stanleytools_id



Stanley Tools ID